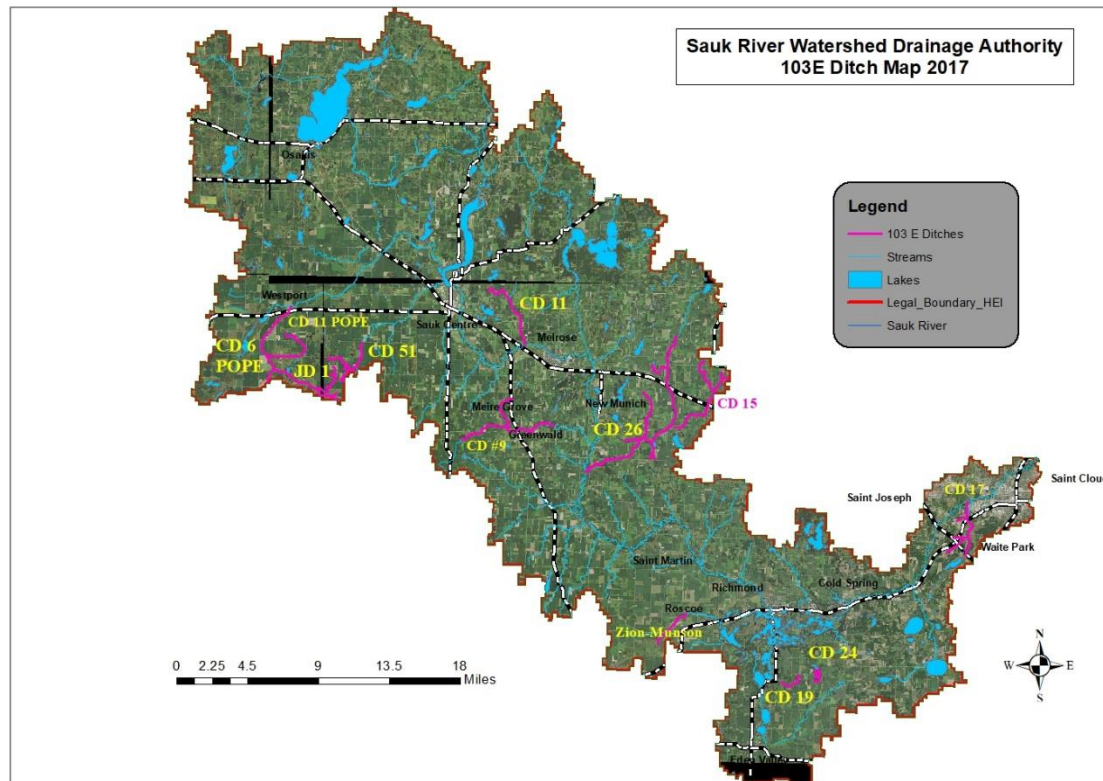


## Sauk River Watershed Drainage Authority 103E Ditch Inspection Report CY 2019



As the Sauk River Watershed Drainage Authority (SRWDA) Ditch Inspector, it is my duty to report that the condition of the 12 public drainage systems under your authority range from poor to good condition.

The SRWDA is the drainage authority for two county drainage systems in Pope County, eight county drainage systems in Stearns County and one joint drainage system between Pope and Stearns Counties.

Several major repairs are planned to bring three of the systems (Pope/Stearns Joint Ditch #1, Pope County Ditch #6, and Pope County Ditch #11) back to their As Constructed or Subsequently Improved Condition (ACSIC). Several systems have been recently repaired (Stearns County Ditch #11) or are under repair currently (Stearns County Ditch #9). Two systems are in the process of a Redetermination of Benefits (Stearns County Ditch #17 and Stearns County Ditch #24).

Minnesota Statutes 103F.48 (Buffer Law) and Minnesota Statute 103E.021 violations have been found on two ditch systems and corrective actions have been initiated. Details are listed in the narrative that follows.



## **Pope County Ditch #6**

### **2018**

Visual inspection of this system was completed by ground in 2018. No major issues could be seen visually. A preliminary engineer's report was completed in September of 2016, indicates the need for repair work, and recommended a Redetermination of Benefits. The Redetermination of Benefits is complete and the repair process is moving forward. The plan was to repair the system in 2018, but due to regulatory concerns, this will likely be delayed until 2019. Noxious weed control was completed in July and August of 2018. Staking of the Buffer Markers will be completed after the repair work is done. Consolidation discussions of Pope County Ditch #6, Pope County Ditch #11 and Pope/Stearns Joint Ditch#1 (Krantz) is on hold until repairs are completed.

A beaver dam was noted late in 2018 on the upper reach of Branch 1. Due to cold weather, I was unable to find a trapper to remove the problem beaver and then remove the dam. It was decided to conduct these activities in the spring 2019.

### **2019**

Visual inspection of this system was completed by ground in 2019. No major issues could be seen visually. A preliminary engineer's report was completed in September of 2016, indicates the need for repair work, and recommended a Redetermination of Benefits. The Redetermination of Benefits proceedings were opened for review of the Outlet fees to be charged to Pope/Stearns Joint Ditch#1. The plan was to repair the system in 2019, but due to regulatory concerns, this will likely be delayed until 2020-21. We are currently in the process of obtaining permits from the United States Army Corps of Engineers and State of Minnesota Wetland Conservation act, to mitigate for the affects this repair may have on wetlands that have re-established in the upper reach of Pope County Ditch #6 and upstream in Pope/Stearns Joint Ditch#1 (Krantz). Once the permitting is complete, the Redetermination of Benefits process can then be continued and completed.

Noxious weed control was completed in July and August of 2019. Staking of the Buffer Markers will be completed after the repair work is done. Consolidation discussions of Pope County Ditch #6, Pope County Ditch #11 and Pope/Stearns Joint Ditch#1 (Krantz) is on hold until repairs are completed.

A beaver dam was noted late in 2018 on the upper reach of Branch 1. Due to cold weather, I was unable to find a trapper to remove the problem beaver and then remove the dam. It was decided to conduct these activities in the spring 2019.

The beaver were trapped in early 2019 and the dam was removed.

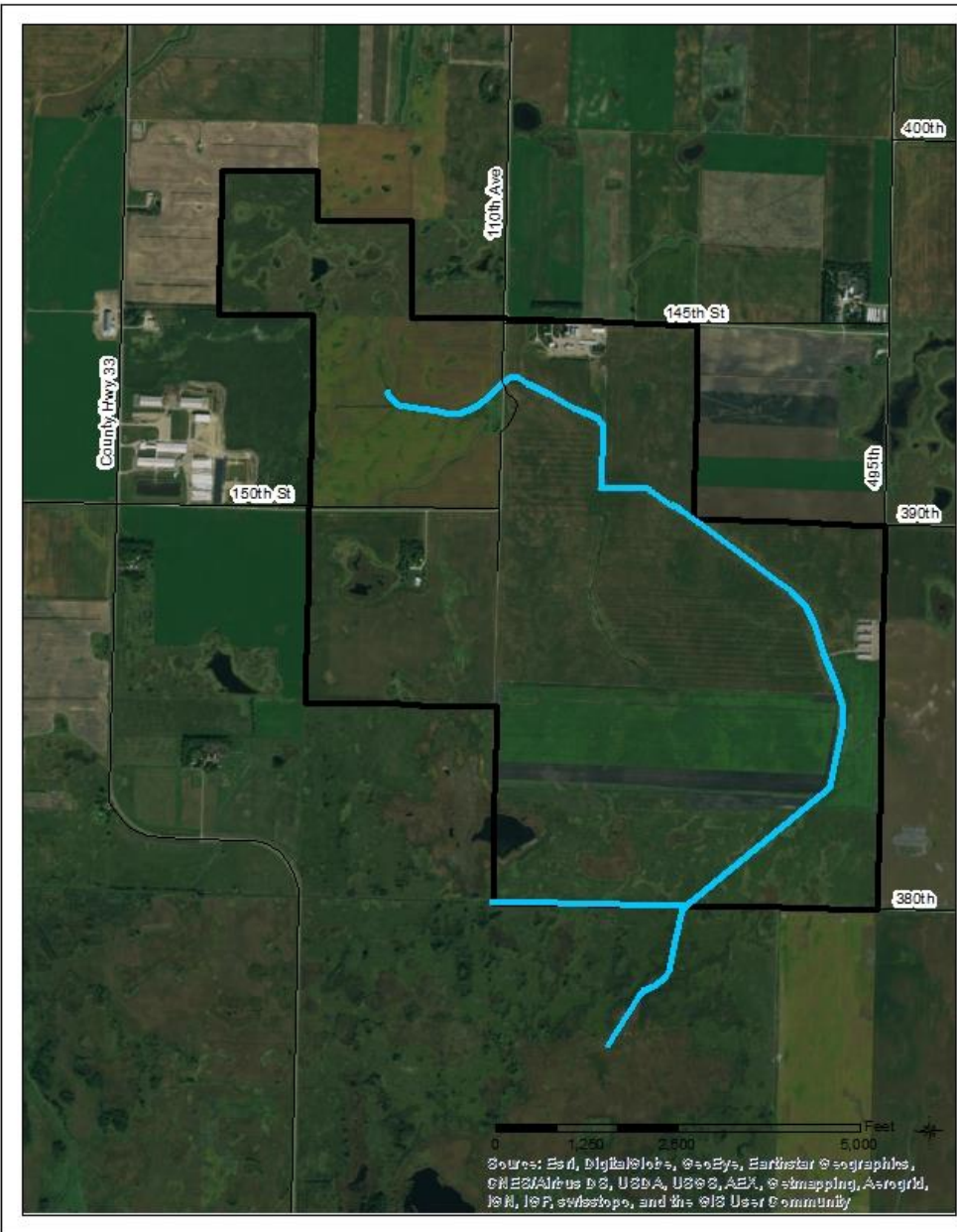
In late summer 2019, another beaver dam was reported within the portion of the ditch in section 3 of Westport Township, on the Minnesota Department of Natural Resources property. I obtained permission to use ATV to inspect the area from the Minnesota Department of Natural Resources Area Wildlife Manager, Kevin Kotts. Upon inspection by ground, there was no dam located. I inspected one mile each side of the



524 4<sup>th</sup> Street South  
Sauk Centre MN 56378  
Phone: (320)-352-2231  
Fax: (320)-352-6455  
Web: [www.srwdmn.org](http://www.srwdmn.org)

---

reported location. I did see two beaver in the channel. Water levels were very high due to recent heavy rains. After the inspection was complete, the landowner that reported the dam noted that it had washed out with the high flows. I continue to monitor the situation and will address the concern if it arises.



**Pope County Ditch 11**

The land area drained by Pope County Ditch 11 lies 7.5 South East of Westport, Minnesota. The Ditch consists of the Main Stem outleting into Branch One of County Ditch 6 and a lateral outleting into Kranz Lake. The total ditch length is 3.5 miles.



Date: 10/27/2016

---

## **Pope County Ditch #11**

### **2018**

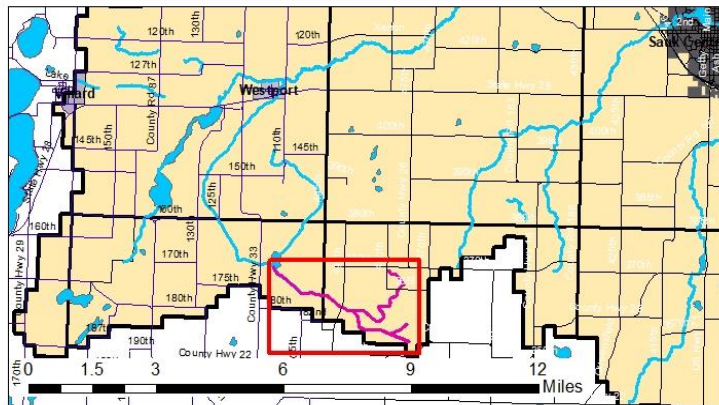
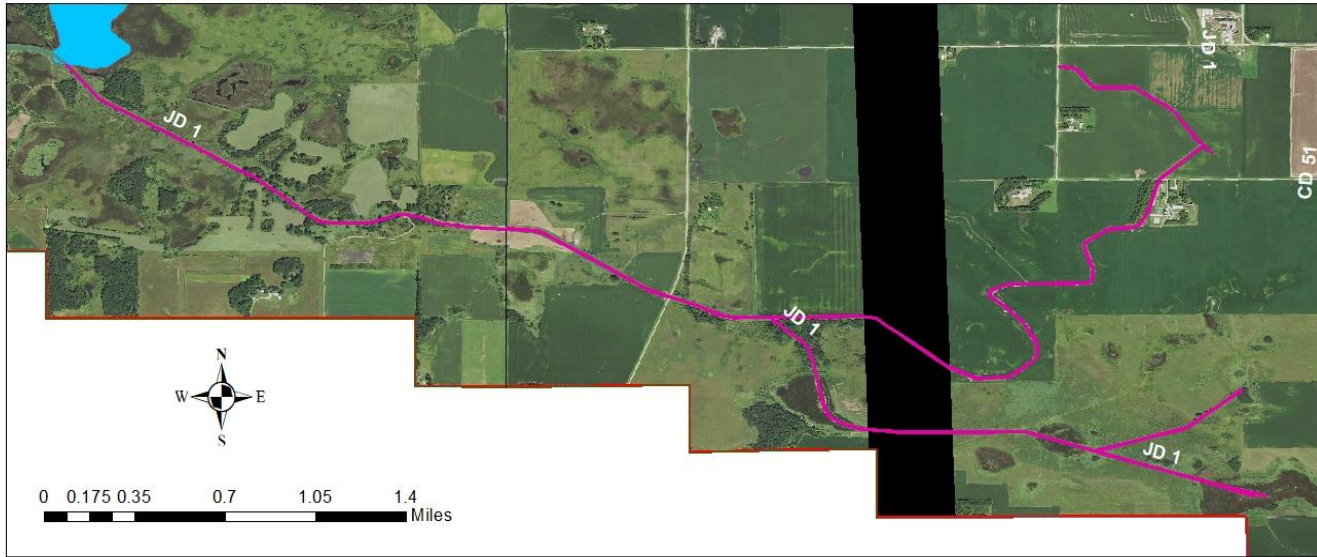
Visual inspection of this system was completed by ground mostly at crossing locations. No major issues could be seen visually. A preliminary engineer's report was completed in September of 2016, indicates the need for repair work. A Redetermination of Benefits was completed in 2018 and adopted in early 2019. Consolidation discussions of Pope County Ditch #6, Pope County Ditch #11 and Pope/Stearns Joint Ditch#1 (Krantz) is on hold until repairs are completed. The repair process was continued and will require some work with regulatory agencies in regard to wetland affects. It is planned that the repair will be completed in 2019. Staking of the Buffer Markers will be completed after the repair work is done. Noxious weeds were sprayed in 2018.

### **2019**

Visual inspection of this system was completed by ground mostly at crossing locations. No major issues could be seen visually. A preliminary engineer's report, completed in September of 2016, indicates the need for repair work. A Redetermination of Benefits was completed in 2018 and adopted in early 2019. Consolidation discussions of Pope County Ditch #6, Pope County Ditch #11 and Pope/Stearns Joint Ditch#1 (Krantz) is on hold until repairs are completed. The repair process was continued and will require some work with regulatory agencies in regard to wetland affects. It is planned that the repair will be completed in 2020-21. Staking of the Buffer Markers will be completed after the repair work is done.

A beaver dam was located in the main ditch, just east of County Road #33 early summer 2019. Beaver were trapped and the dam was removed.

Noxious weeds were sprayed in 2019.



### Pope/Stearns Joint Ditch #1 (Krantz)

The Drainage area of this system is 6,528 acres located in parts of Pope and Stearns Counties. The ditch is located approx. 4.5 miles SSE of Westport.

- Main Channel = 4.16 miles
- Branch 1 = .5 miles
- Branch 2 - 1.5 miles
- Fork 1 Branch 2 = .5 miles
- Fork 1 Branch 1 = Abandoned





524 4<sup>th</sup> Street South  
Sauk Centre MN 56378  
Phone: (320)-352-2231  
Fax: (320)-352-6455  
Web: [www.srwdmn.org](http://www.srwdmn.org)

---

## **Pope/Stearns Joint Ditch #1 (Krantz)**

### **2018**

Visual inspection of this system was completed using aerial drone footage on part of the main system upstream of CSAH 33 and included Branch 2, flown in summer 2018, as well as ground inspection of a few locations. No major issues could be seen visually. A preliminary engineer's report was completed in September of 2016, indicates the need for repair work, and recommended a Redetermination of Benefits. The Redetermination of Benefits was completed in spring of 2018. The discussion to consolidate Pope County Ditch #6, Pope County Ditch #11 and Pope/Stearns Joint Ditch#1 (Krantz) was continued until after the repairs to all three systems are completed. The repair process has resumed with the development of the final repair report and discussions with regulatory agencies regarding wetland impacts. It is planned that the repair process will be completed in 2019. The Raymond Township Weed Inspector issued a notice of Wild Parsnip growing in one location along the ditch which prompted a full ground inspection of the system. No other major issues were documented, knowing that a full repair was planned for 2019-20. Noxious weed control throughout the system was completed in July and August of 2018. Staking of the Buffer Markers will be completed after the repair work is done.

### **2019**

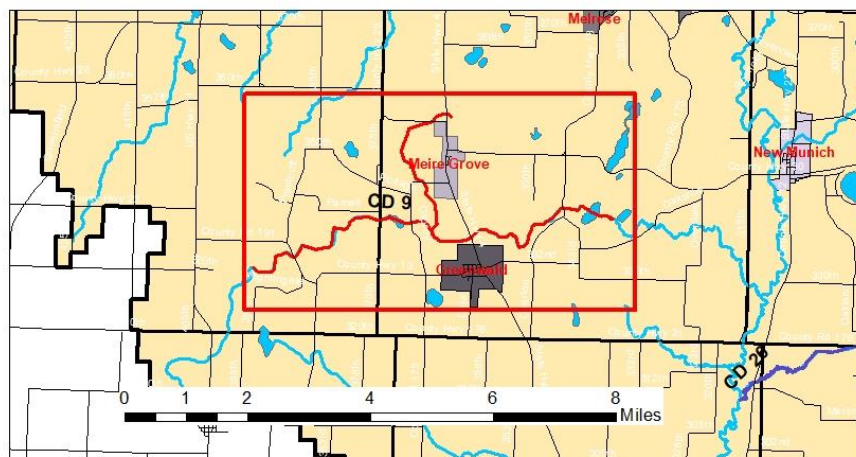
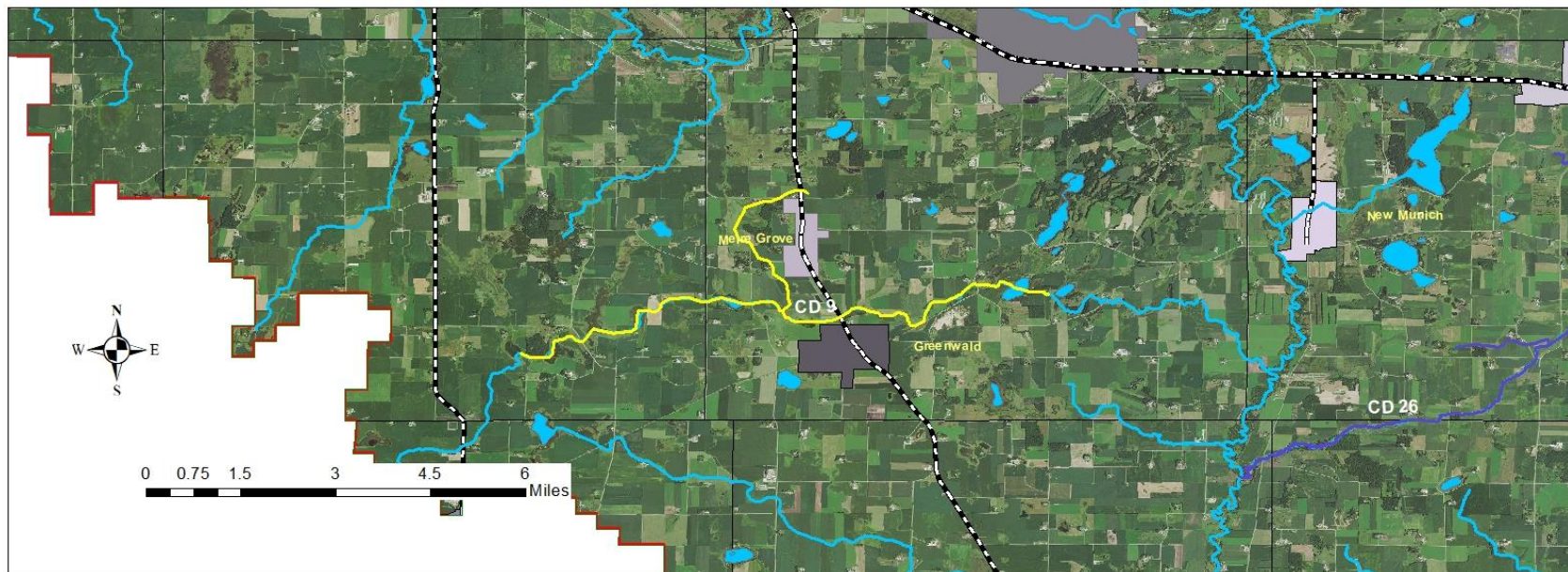
Visual inspection of this system was completed by ground inspection of several locations. A large beaver dam was located on Branch #2. Accessibility was a problem due to lack of tree maintenance adjacent to the channel and spoil banks not being leveled from last excavation work. A contractor was hired to clear the trees and brush adjacent to the East side of the channel for 500 feet, to the location of the dam. The beaver were trapped and the dam was removed. Concerns for the condition of the Branch #2 channel remain.

A preliminary engineer's report completed in September of 2016, indicates the need for repair work, and recommended a Redetermination of Benefits. The Redetermination of Benefits was completed in spring of 2018. The proceedings were re-opened to consider the outlet fee to Pope County Ditch #6 as it relates to the elevation of the culvert under Pope CSAH 33. Changing the elevation of the culvert triggers wetland permitting requirements. Until the elevation of the culvert is finalized through the permitting process, the Redetermination of Benefits cannot be finalized.

To further complicate the issue, The Krantz Lake dike is in need of repair. It was discovered in the research that there is no LGU that has the responsibility to maintain it. The SRWD holds a permanent easement for access to the dike for construction and maintenance. Repairing the dike is instrumental in not having an effect on the wetland characteristics of Krantz Lake with the repair of Pope/Stearns Joint Ditch#1 and the lowering of the CSAH 33 culvert. SRWD Staff will complete an existing condition survey of the dike in spring 2020.

The discussion to consolidate Pope County Ditch #6, Pope County Ditch #11 and Pope/Stearns Joint Ditch#1 (Krantz) was continued until after the repairs to all three systems are completed. It is planned that the repair process will be completed in 2020-21. No other major issues were documented, knowing that a full repair is planned.

Noxious weed control throughout the system was completed in July and August of 2019. Staking of the Buffer Markers will be completed after the repair work is done.



### Stearns County Ditch #9

The Drainage area of this system is approximately 20.5 square miles with the headwaters located 3.5 miles West of Greenwood.

Branch 1 begins just north of Meier Grove and aligns to the west of Meier Grove and South to the junction with the main channel. It is approximately 2.5 miles in length and is a combination of open ditch and tile.

Main Channel = 7 miles  
Branch 1 = 2.5 miles



## **Stearns County Ditch #9**

### **2018**

Visual ground inspection of this system was completed during the repair construction work, fall of 2018, along with additional ground inspection of a few locations along the main channel. The repair work is underway with all tile being replaced in fall 2018. Work continues over the winter months and into 2019 on the rest of the open channel repairs. Post construction the posting of the buffer will take place. Noxious weed control was completed in July and August of 2018. Moving forward we will work to finish the repair and level and seed the spoil.

### **2019**

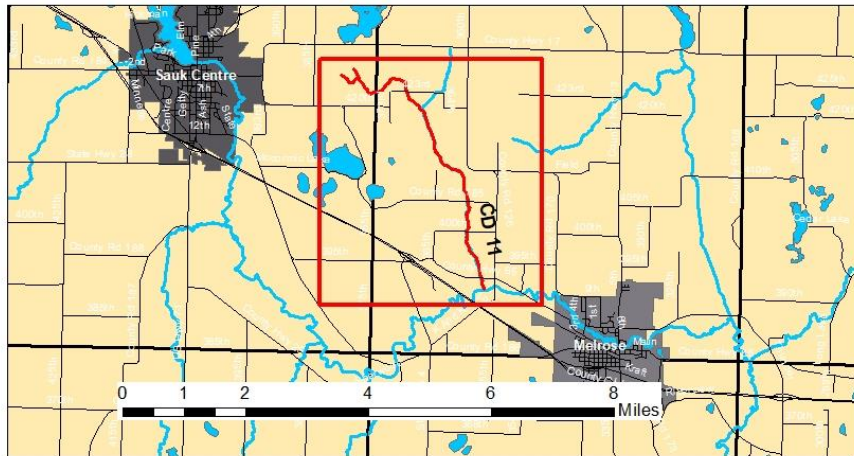
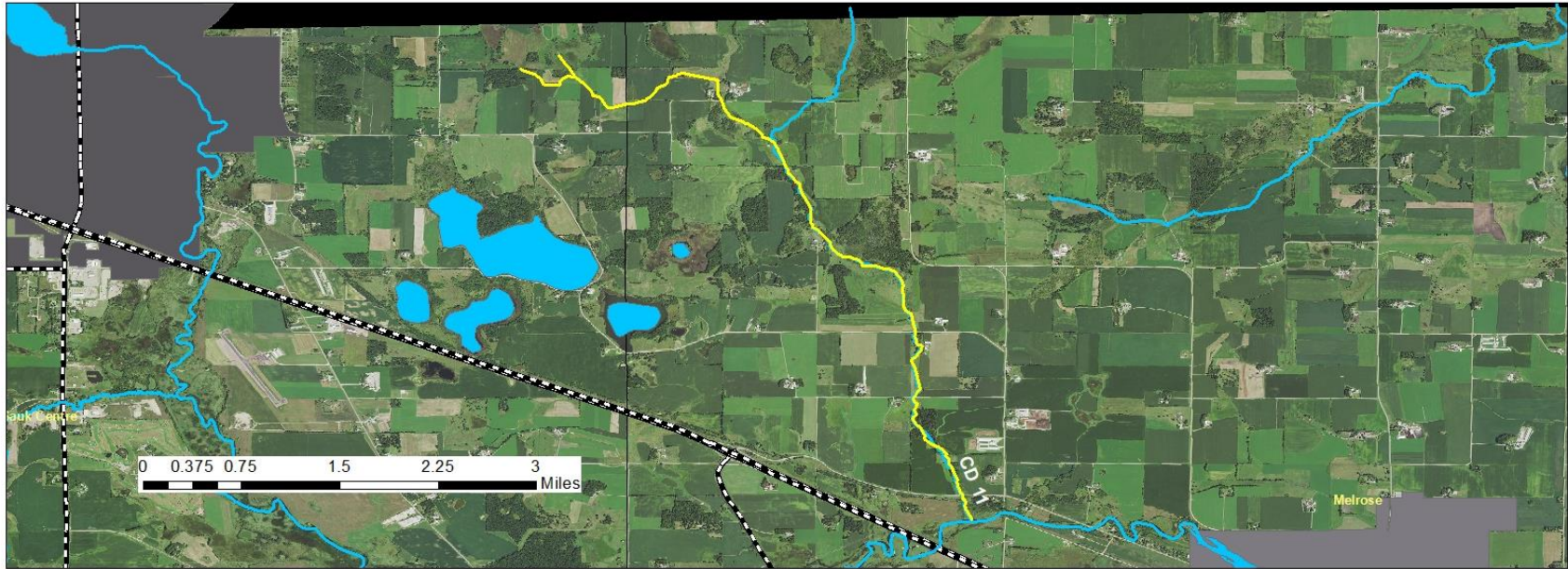
Visual ground inspection of this system was completed during the repair construction work in 2019. The repair work is all but complete. The new tile is installed and all but 150 feet of the open channel has been cleaned, upstream of Branch #1. Noxious weed control was completed in July and August of 2019.

An operator error on the part of the contractor was made in two different locations. First the operator cleaned the main channel from the confluence of Branch #1 and State Highway #4. This stretch was not included in the scope of this repair. Spoils were piled along the north side of the channel, causing concern for Mr. Dean Meyer and his ability to continue haying the meadow area. The landowner had three concerns. The first was with the placement of the spoil along the north side of the channel, it severely limited the drainage ability of the adjacent lands, blocking the sheet flow from the meadow along with a small block in the private ditch adjacent to Hwy #4. Second, once the contractor leveled and seeded the spoils, the landowner opinion was they were not smooth enough for haying practices, as prior to the excavation work. Part of the spoils on the west end of the landowner's property, was not leveled due to wetness. Third, the contractor may have damaged the landowner's tile inlets to the system on the south side of the channel during excavation.

To remedy the situation, the contractor provided additional seed for the landowner and the landowner re-worked the spoils to get them in the necessary condition to be able to hay the area. The SRWDA approved the landowner's request for reimbursement of \$990.28 to conduct this work. Water levels in the channel continued to be high all season due to the extremely wet weather. Consequently the tile inlets were not able to be inspected nor was the leveling of the rest of the spoils on the west end. These remaining items are included on the punch list for completion as soon as conditions allow.

The second error was the cleaning of a private ditch in the SW ¼ of Section 19 Grove Township. The landowner asked to have the spoils leveled in this location as well. This was added to the punch list for the contractor.

The operator in these instances has been relieved of his position.



### Stearns County Ditch #11

The Drainage area of this system is approximately 10 square miles with the headwaters located 2 miles east of Sauk Centre, the outlet into the Sauk River 2 miles west of Melrose, all North of I-94 in Stearns County.

Main Channel = 9 miles  
Branch A = .5 miles



## **Stearns County Ditch #11**

### **2018**

Inspection of this system consisted of ground inspection during the repair work. The repair is complete. Buffers have been seeded where necessary and the posting is complete. Herbicide was applied summer of 2018 in an attempt to control the recently removed woody vegetation and noxious weeds. One landowner, Harvey Middendorf, is grazing the buffer area and I continue to work with him to establish a grazing plan. Work will continue to monitor and maintain the establishment of the buffer. Spraying is planned where needed to control woody vegetation and undesirable plants.

I will continue to monitor the stability of the banks as they were not flattened for stability purposes during the repair and may erode. There is a potential for continued regular maintenance needed on this system.




### **2019**

Inspection of this system consisted of ground inspection. Herbicide was applied again in summer of 2019 in an attempt to gain more control of woody vegetation and noxious weeds. Work will continue to monitor and maintain the establishment of the buffer. Spraying and/or mowing is planned in 2020, where needed, to control woody vegetation and undesirable plants.

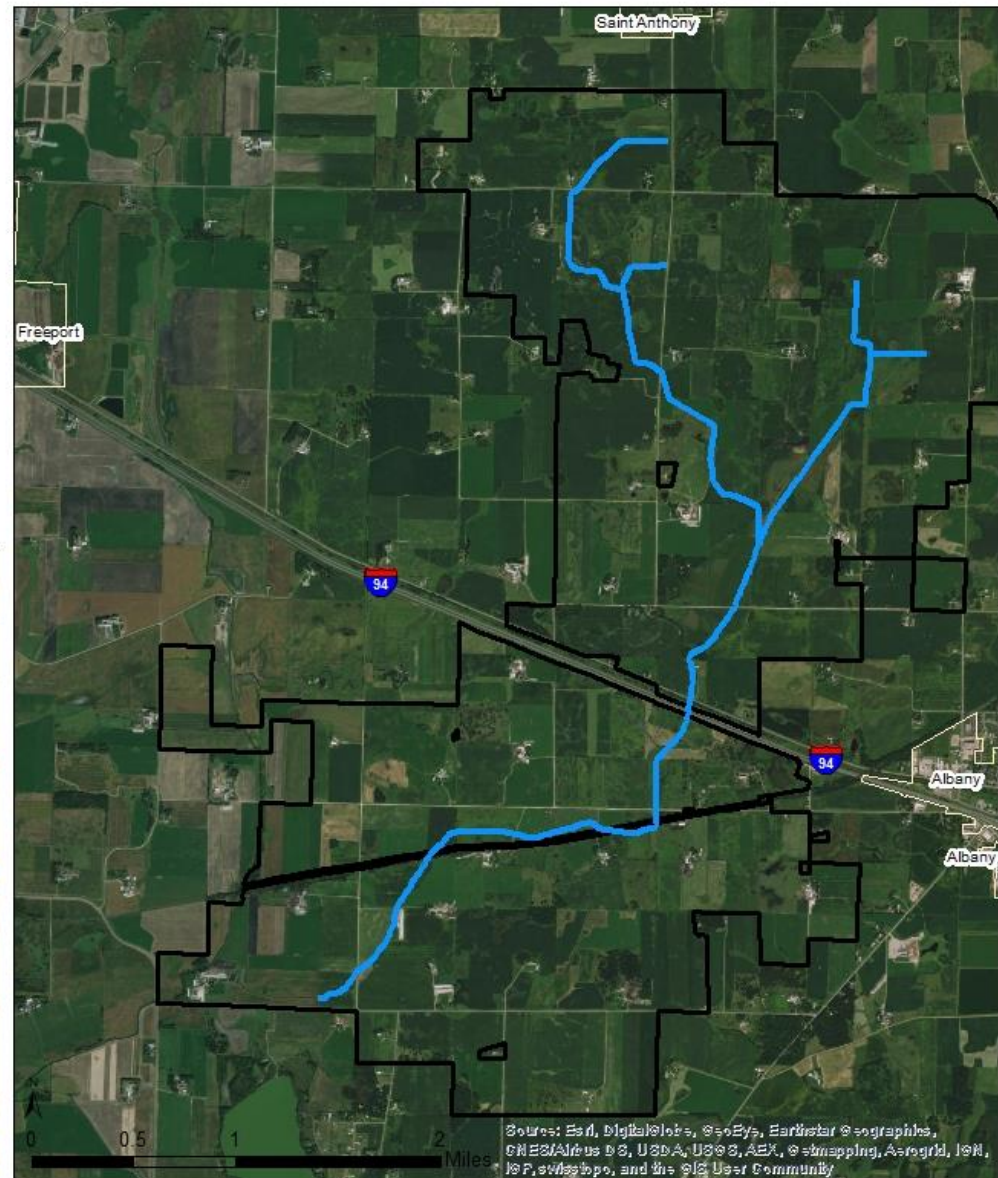
I will continue to monitor the stability of the banks. There is a potential for continued regular maintenance needed on this system due to bank sloughing and sedimentation. Consideration should be given to the potential for a channel restoration project to stabilize the channel and those areas of natural meander. This will provide for more cost efficient maintenance of the drainage benefits of the system as well as returning the channel to a more natural state, improving water quality and aquatic habitat.

## County Ditch 15

### Legend

-  County Ditch 15
-  Municipality Boundaries
-  CD15 Benefited Area

County Ditch 15 consists of a main stem and two branches. The ditch flows from north to south terminating approximately 3,300 feet east of County Ditch 26. The main stem of the ditch is just over 5 miles, branch 1 is just under half a mile, and branch two is a little over 3 miles.



## **Stearns County Ditch #15**

### **2018**

Inspection of this system consisted of ground inspection at road crossings and multiple segmented inspections via ATV. This system had recently been repaired. There were no significant issues noted in the channel. Buffer Posting is complete. The buffer is generally not in the condition expected in some areas because the seedbed had not been prepped as expected and the lack of weed control. I continue to work to get the buffer seeding established with weed maintenance and additional seeding. Noxious weeds were sprayed in 2018.

The unpermitted culvert crossing for Fred Schlangen is being processed. Mr. Schlangen has applied for a permit and retained an engineer to evaluate the appropriate design opening that will not cause adverse effects downstream.

I will continue to monitor the stability of the banks as they were not flattened for stability purposes during the repair and may erode. There is a potential for continued regular maintenance needed on this system.

### **2019**

Inspection of this system consisted of ground inspection at road crossings and some segments by foot and ATV. Stearns County is working to repair a couple of crossings on the RR grade in Section 19 of Albany Township. District Staff have been in close communication with Stearns County during this process.


Stearns County Ditch #15 suffers many of the same issues as Stearns County Ditch #26, with spoil placement after the last repair. We continue to work to get these spoils leveled and seeded in an attempt to manage the buffer area. Channel stability does not appear to be as much of a concern.

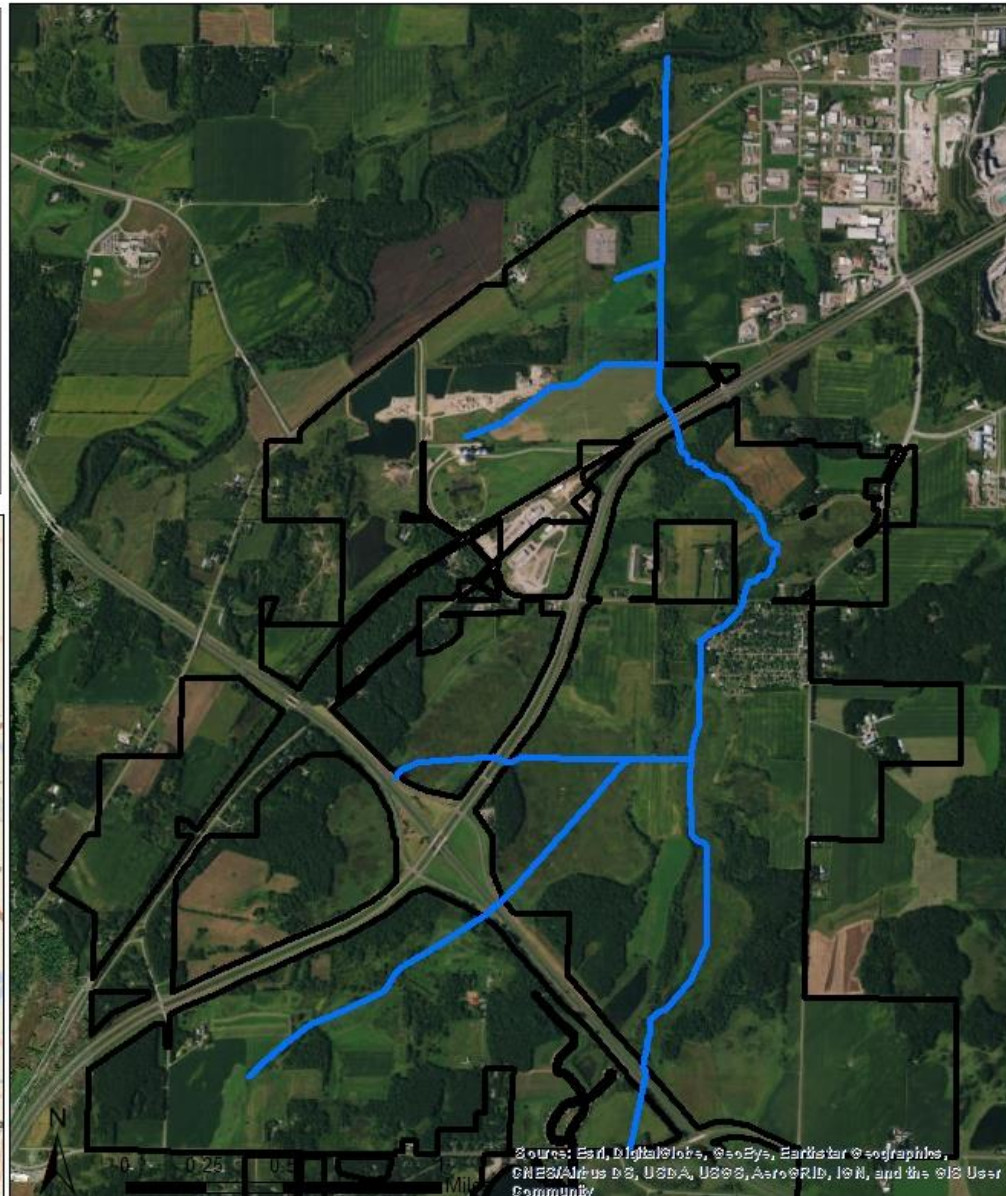
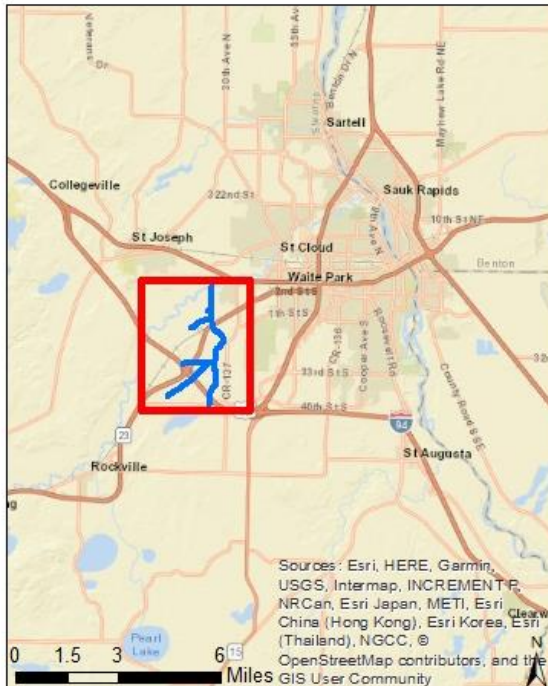
I did review one site with a landowner in Section 17 of Albany Township where he wanted to remove the trees adjacent to the ditch system buffer area. The area in question is also one of those sites where the spoils need to be spread and the buffer properly seeded. I communicated with his contractor to provide an estimate to level spoil in that area and remove any tree debris from the ditch channel. At the writing of this report, I have not received this estimate.

Noxious weeds were sprayed in 2019.

## Stearns County Ditch 17

The headwaters of CD17 begin approximately 1.5 mi West of the City of Waite Park. The ditch flows South to North for approximately 3.5 miles, CD 17 consists of the main, two branches, and a fork on Branch 1.

-  SCD #17 Benefited Area
-  SCD #17 Open Ditch



## **Stearns County Ditch #17**

### **2018**

Visual inspection of this system was done by ground at most ditch crossings. Limited survey work was done to establish the legal grade for the Sieben Cattle Crossing. It was noted that the existing grade at that location was 0.6' above the ACSIC. Correspondence has been received from several landowners/individuals describing the system in poor condition. A full inspection of the system will be completed in late spring 2019 during the posting of the buffer.

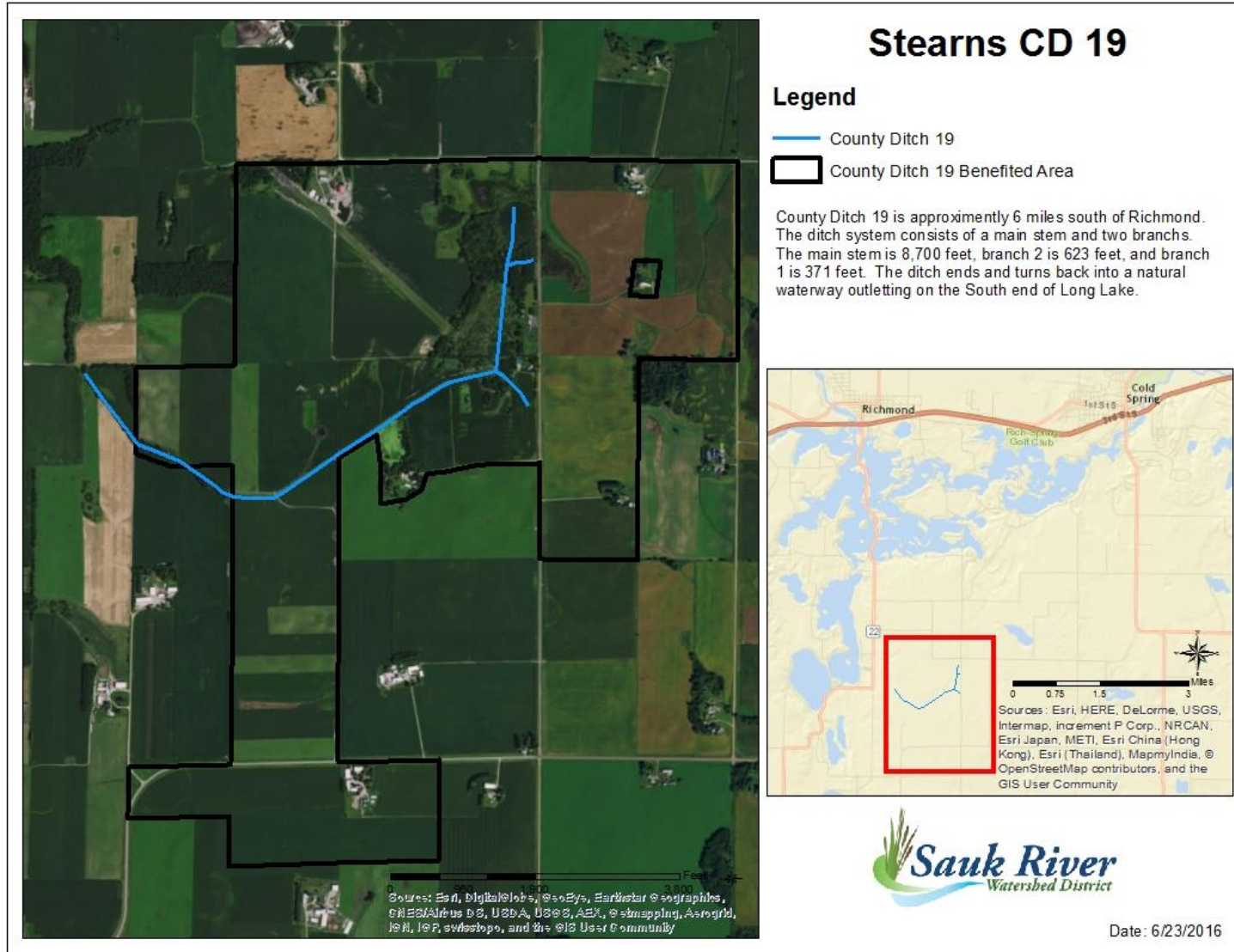
If the board deems appropriate, I would recommend a full survey of the system be completed in 2019 in preparation for a possible repair. This may lead to a finding where an ROB would be in order.

### **2019**

A visual inspection of this system was conducted by ground at road crossings and by foot. The system is overgrown with woody vegetation and suspected to be in need of repair. An informational meeting was conducted with the landowners to describe the findings of the inspection and to discuss the need for a Redetermination of Benefits. It was agreed to conduct the ROB before expending funds to investigate the need for a repair. The SRWDA ordered a ROB on this system in 2019. It is currently in process.

A 103F.48 Buffer violation was discovered in Section 24 of St. Joseph Township. James W Miller was found to be in violation of MS 103F.48. The notice of violation and the corrective action notice was mailed on October 17, 2019.

---



## **Stearns County Ditch #19**

### **2018**

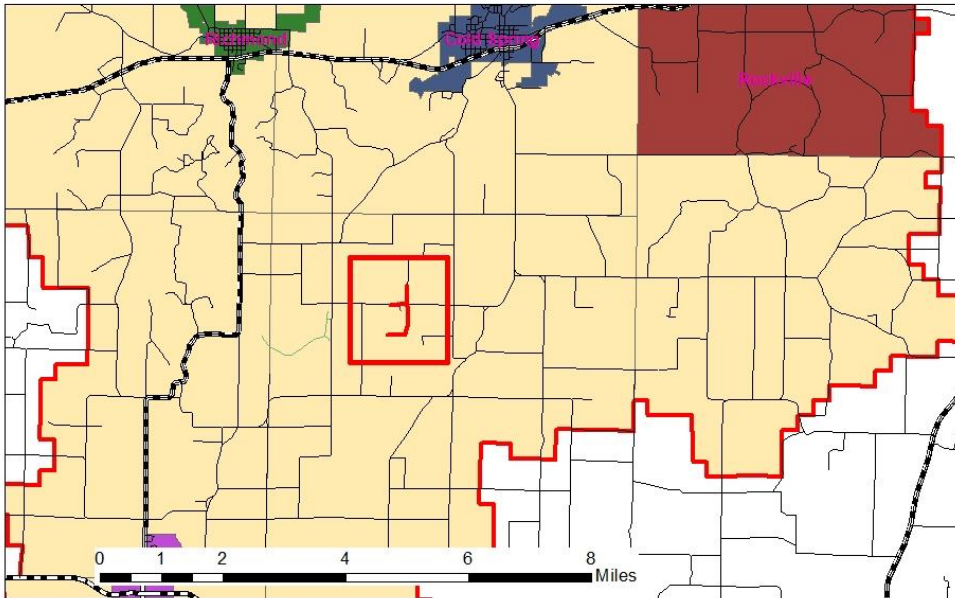
Visual inspection of this system was completed by ground inspection at ditch crossings. The Redetermination of Benefits for this system was completed in 2017. Heavy tree growth was found in section 13 of Eden Lake and section 18 of Luxemburg Townships

No recent survey has been completed to determine the condition compared to the ACSIC. It is unknown when this system was last surveyed. It may be beneficial to survey this system to know its condition as it has not been surveyed since the SRWDA has become the drainage authority. However, if the landowners do not feel the system needs repair, we can wait with any survey work. An informational meeting may be prudent after the growing season 2019.

A more detailed buffer inspection will be completed when the buffer posting is completed summer of 2019. Buffer establishment will be done on the areas necessary. Noxious weeds were sprayed in 2018.

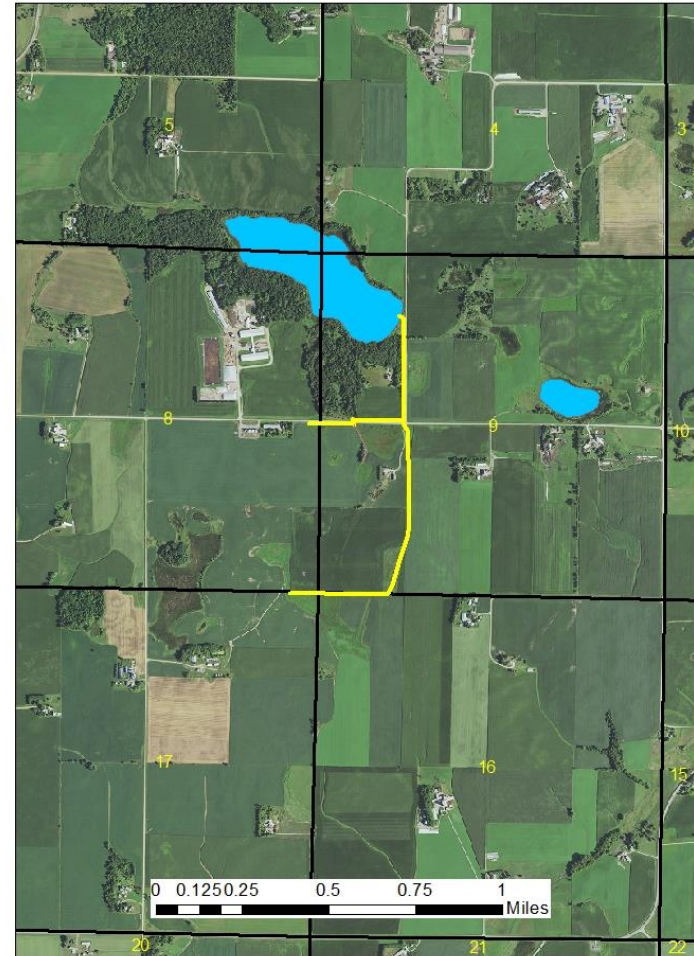
### **2019**

Visual Inspection was completed by ground inspection at crossings and by foot. We solicited and received estimates for tree removal along approximately 2,600 feet of the system at the outlet end. Those estimates ranged from \$65K to \$130K. This prompted an informational meeting with the landowners to further discuss the condition of the system. After the landowner meeting, it was agreed to hold off on the tree removal for the moment and take a few survey shots in the system to determine if a full survey would be warranted. This work will be conducted in house in the spring 2020, and reported back to the SRWDA and the landowners. Some work will be done with the engineer to determine the ACSIC from the records we have on file.



**Stearns County Ditch #24**

Stearns County Ditch #24 is located about 5 Miles SE of Richmond. The Main is about 1 mile in length with one lateral approximately 0.25 miles in length. The ditch drains about 1 square mile.



## **Stearns County Ditch #24**

### **2018**

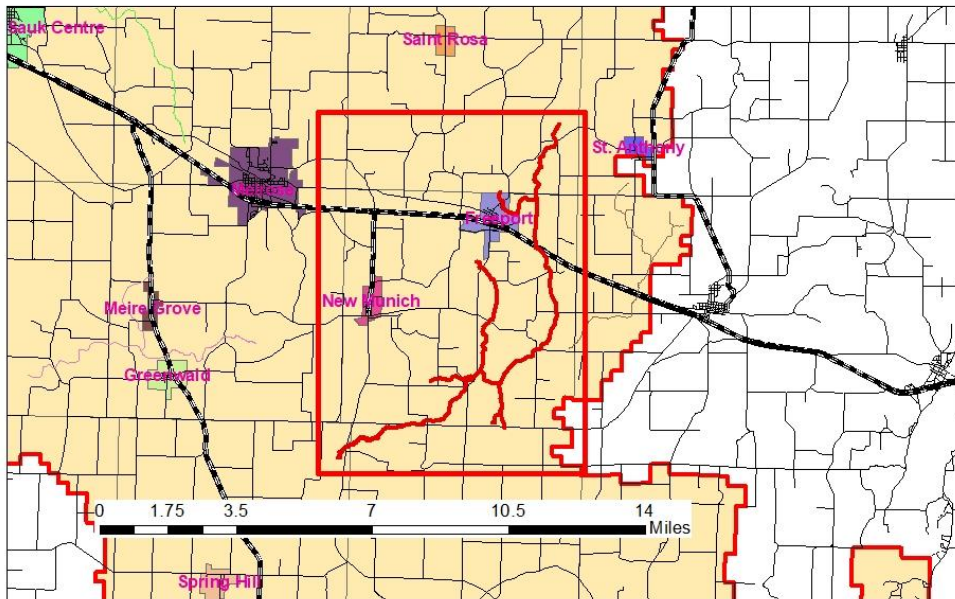
Visual inspection of this system was completed by ground in 2018. No issues were observed. Buffer posting was completed in 2018. No major issues were noted during the inspection. The Redetermination of Benefits process has been authorized and the viewers have been appointed. It is unknown when this system was last surveyed although I would not recommend it at this time. The system appears to be functioning adequately.

There are approximately 9 assessed landowners on this small system. It has been discussed whether a Redetermination of Benefits is really needed on this system.

### **2019**

Visual inspection of this system was conducted by ground in 2019, mainly of those areas adjacent to the road. An informational meeting was scheduled with the assessed landowners to discuss the condition of the system and the current benefits assigned to the system

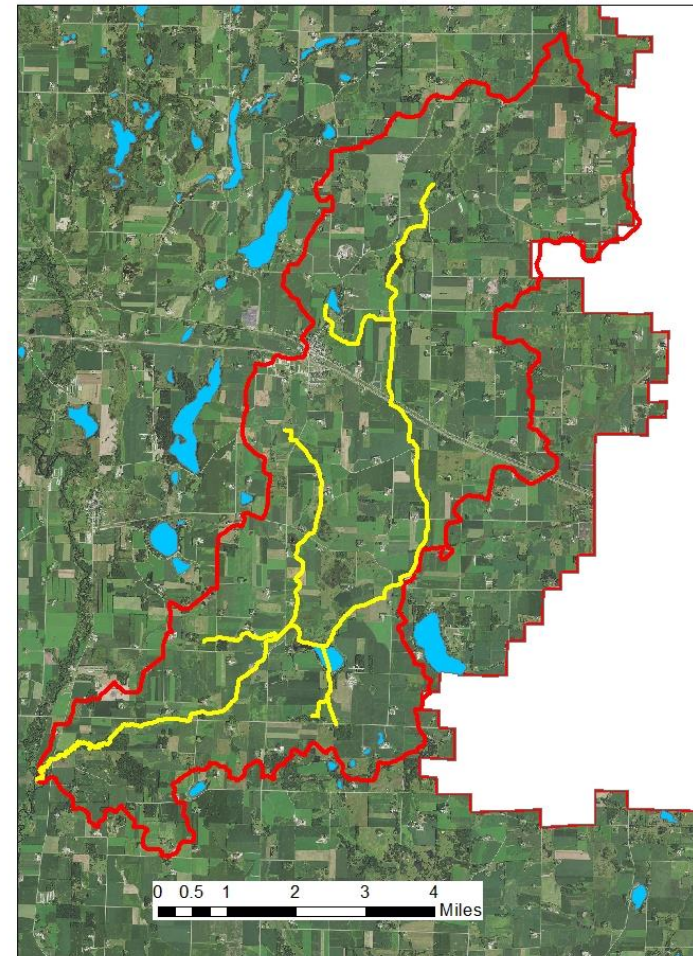
The landowners felt that the system was functioning well and did not likely need any repair. They did, however, think that a Redetermination of Benefits was warranted as the drainage on the landscape had changed significantly, the benefits did not reflect the present day values, and there were errors in the current benefits role. The SRWDA ordered that a ROB be completed on this system. It is currently in process.



### Stearns County Ditch #26

Stearns County Ditch #26 is approximately 20 miles in length, comprised of the main and 4 laterals. The drainage area is outlined in Red and is approximately 32 square miles.

The main channel shares the alignment of Getchell Creek. The ditch begins approximately 3 Miles NNE of Freeport and outlets in the Sauk River approximately 4 miles SSW of New Munich.



## **Stearns County Ditch #26**

### **2018**

Visual inspection of this system was completed using aerial drone footage, flown in mid-summer 2018, by kayak north of Upper Valley Road and downstream of Getchell Lake to CR 176, along with ground inspection of the rest of the system at crossings and by atv. This system had recently been repaired. Several erosion control measures had been completed consisting of toe protection with rip-rap and coir logs. These areas appeared to be very stable and vegetation was regenerating well. Posting of the buffer is complete. Bank sloughing/toe erosion continues on the portion of the main north of 330<sup>th</sup> Street between Oakview Road and County Highway #11. Also noted were several bank erosion locations between the outlet of the main and this location. The channel DS of Getchell Lake was heavily infested with submergent vegetation late in the year. An attempt was made to obtain a permit to use an aquatic herbicide to treat the vegetation but was denied. Water levels were high late in the season causing issues with low water crossings and accessibility to farmland. Eventually the water receded in the fall and landowners were able to harvest their crop. South of Upper Valley Road, sloughing was noted and repaired during the winter 2018. It has since been reported that the system is functioning much better. Beaver were a problem in the Upper Valley Road crossing. The township cleared the crossing at their expense. Butch Thull was hired to level spoils from the recent repair work and to seed the buffer in 2018. Work was not finished in 2018 and will continue in 2019. A 100 ft long bank slough was repaired and armored in section 33 of Oak Township. Noxious weeds along with trees and brush were sprayed in 2018.

I anticipate this system will continue to require maintenance due to steep banks and sloughing issues. There will continue to be sediment removed and bank sloping as failures occur.

### **2019**

Visual inspection of this system was completed on the ground by ATV and at road crossings. Several complaints were fielded in regard to bank sloughing and sedimentation. This prompted a survey to be completed between I-94 and the outlet of the system. A condition report was prepared showing that the majority of the system profile is at or below legal grade with some areas of sedimentation identified due to bank sloughing. Several landowners are concerned with the loss of the banks and the encroachment into their property. Spoils from the recent cleanout were not properly spread so that the buffer strip could be properly established. There was significant conflicting reports from landowners about what could and could not be done with the spoils during the repair. Staff invited and held a landowner information meeting in Melrose to discuss how to best address the stability of the system and essentially recommended that a restoration project be considered. The meeting was attended by approximately 20 people, even though over 420 notices were mailed. The construction of a two-stage ditch design would restore more stable meanders in the channel for lower flows and provide a floodplain for the higher flows, thus requiring less maintenance in the future while maintaining the drainage benefits of the landowners. Most of those in attendance agreed with this approach.



524 4<sup>th</sup> Street South  
Sauk Centre MN 56378  
Phone: (320)-352-2231  
Fax: (320)-352-6455  
Web: [www.srwdmn.org](http://www.srwdmn.org)


---

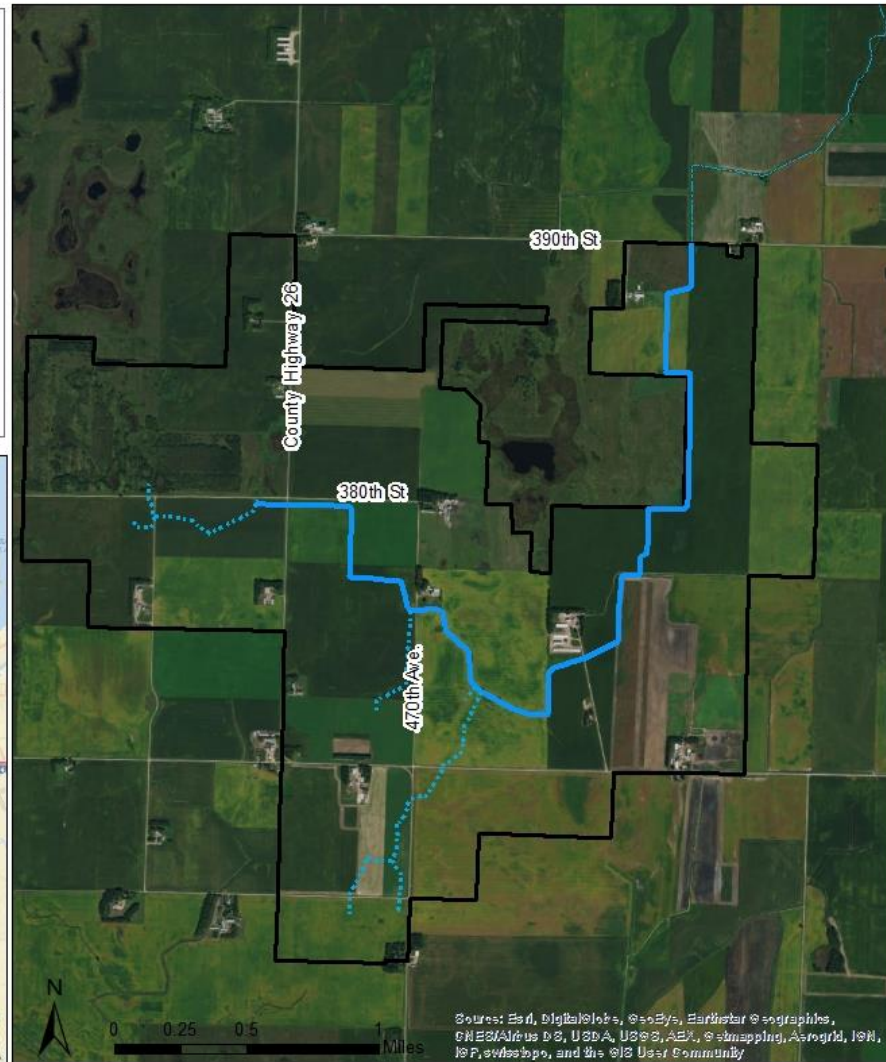
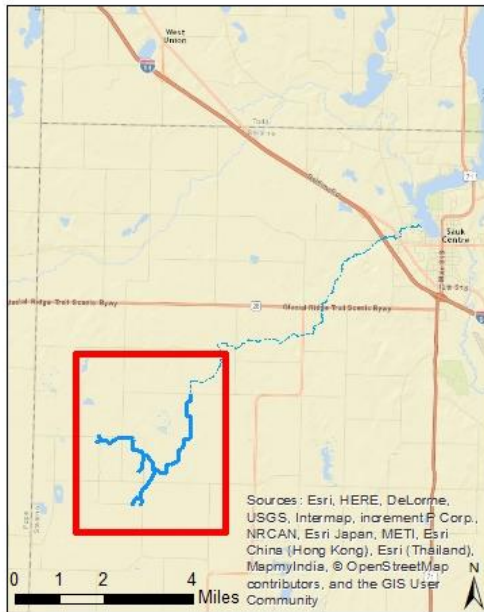
Due to the poor attendance, it was determined that another attempt to share this discussion with the landowners was warranted. The SRWDA did not feel comfortable making decisions to move forward without more input. A second meeting would be scheduled after the holidays.

After the second assessment was approved in fall of 2019, several landowners were upset, not only with the condition of the system, but with the additional assessment. This situation has caused the SRWDA to look at alternative methods for assessing repair costs. Discussion will continue into 2020.

# County Ditch 51

The headwaters of CD51 begin approximately 9 miles southwest of the City of Sauk Centre. The ditch has 4.5 miles of open ditch, and flows west to east for approximately 2.3 miles, and then continues north for approximately 2.2 additional miles.

-  CD51 Benefited Area
-  Hoboken Creek
-  Open Channel
-  Tile



---

## **Stearns County Ditch #51**

### **2018**

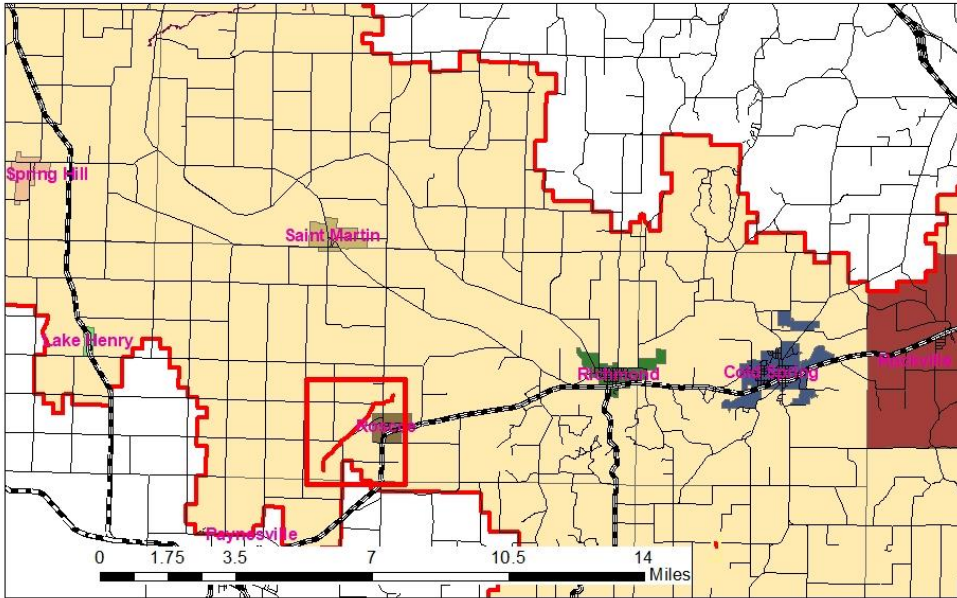
Visual inspection of this system was completed via ground inspection of areas at road crossings and adjacent to roads. The system is functioning well after the cleanout although there are a few final repairs left to be completed, according to the plans. Unfortunately, there are two landowners, Mr. Kenneth Zimmerman and Mr. Gary Berndt that have refused to allow access on their property to complete those repairs. Buffer establishment is required under MS 103F.48 and MS 103e.021. Staking of the buffer markers will be done in spring 2018 on those lands not owned by Mr. Zimmerman and Mr. Berndt. Noxious weeds and woody vegetation were sprayed on lands not owned by Kenneth Zimmerman and Gary Berndt.

### **2019**

Visual inspection of this system was completed via ground inspection of the entire system (walked). The system is functioning well after the cleanout although there are a few final repairs left to be completed, according to the plans.

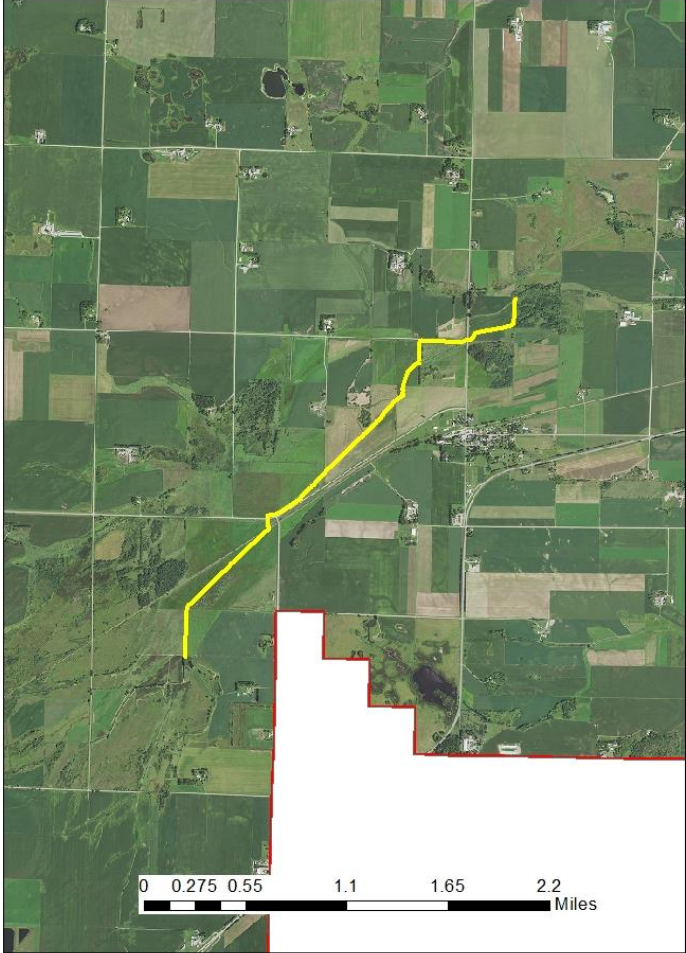
Buffer establishment is required under MS 103F.48 and MS 103E.021. Voxland Enterprises were found to be in violation of both MS 103E.021 and MS 103F.48. Kenneth and Julie Zimmerman were found to be in violation of the buffer requirements under MS 103F.48. Notice of the violations and the corrective action required, were sent via certified mail on September 11, 2019.

Noxious weeds and woody vegetation were sprayed on lands not owned by Kenneth Zimmerman and Gary Berndt.



**Stearns County Ditch Zion-Monson**

Stearns County Ditch Zion-Monson lies just NW of Roscoe. It is approximately 3 miles long and drains approximately 15 square miles.





524 4<sup>th</sup> Street South  
Sauk Centre MN 56378  
Phone: (320)-352-2231  
Fax: (320)-352-6455  
Web: [www.srwdmn.org](http://www.srwdmn.org)

---

## **Stearns County Ditch #Zion-Munson**

### **2018**

Visual inspection of this system was completed by ground inspection at ditch crossings and by ATV during buffer posting. The Redetermination of Benefits for this system was completed in 2017. There were no obvious maintenance issues observed on this ditch.

No recent survey has been completed to determine the condition compared to the ACSIC. It is unknown when this system was last surveyed. It may be beneficial to survey this system to know its condition as it has not been surveyed since the SRWDA has become the drainage authority. However, if the landowners do not feel the system needs repair, we can wait with any survey work. An informational meeting may be prudent after the growing season 2019.

All of this ditch system has adequate buffer adjacent to it as it passes mostly through low meadow land. Noxious weeds were sprayed in 2018.

### **2019**

Visual inspection of this system was completed in much the same manner as 2018 with no obvious issues observed. Those landowners I talked to did not feel the system was in need of any repair and was working adequately. Noxious weeds were sprayed in 2019. Buffer Posting is complete.

END

Respectfully submitted.

---

Jon Roeschlein, Ditch and Permit Manager/Ditch Inspector  
Sauk River Watershed Drainage Authority

Date