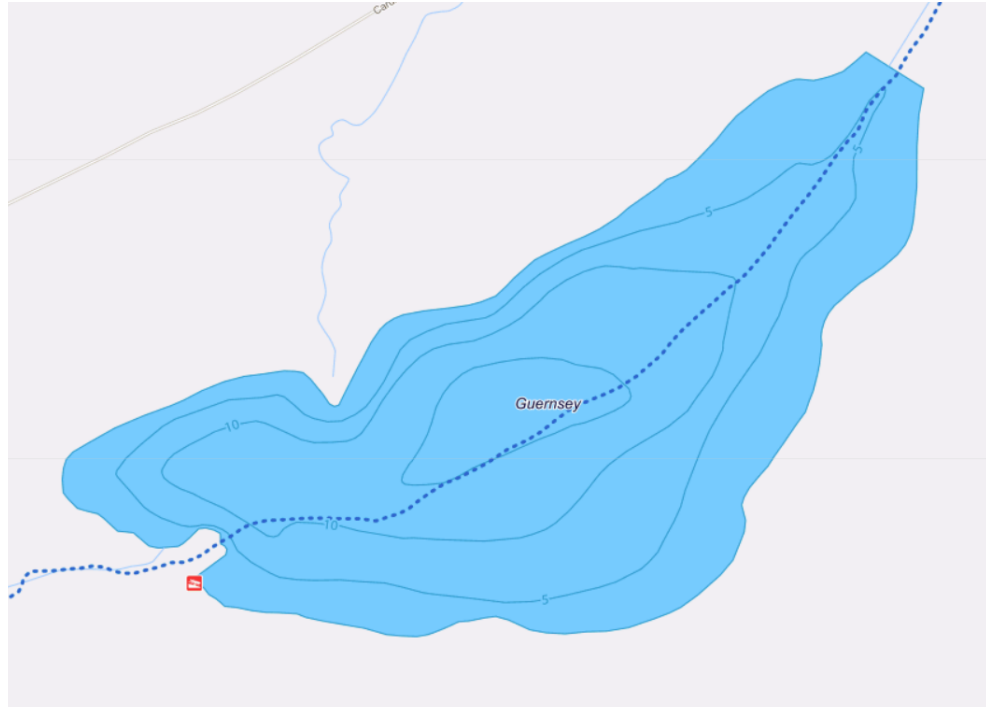


Guernsey Lake (Todd County)

OVERVIEW

Guernsey Lake is a small, quiet 125-acre lake located on the Sauk River about 7 miles southeast of Osakis. As a riverine lake, nutrient levels are high and water clarity is poor. Cattail is the dominant species of vegetation and essentially rings the entire basin. There is little to no residential shoreline development. A concrete public boat ramp is located on the southwest end of the lake near the inlet of the Sauk River. Species

supported in the Sauk River can freely move in and out of Guernsey Lake. Black Crappie and Bluegill are the primary species of management, but there are Walleyes (natural not stocked) in the lake and Northern Pike approaching trophy size have historically been captured in survey nets.



Water Resources Helpful Links

Click on each of the below links to go to relevant and specific information

[Fisheries Survey](#)

[Water Quality](#)

[Water Clarity](#)

[Lake Depth](#)

[Area Recreational Compass](#)

[Aquatic Invasive Species Map](#)

ID: 77018200

County: Todd

Near: West

Union

Area: 121.08 acres

Littoral Area: 118.0 acres

Shore Length: 2.16 miles

Mean Depth: 7.4 feet

Maximum Depth: 19 feet

