

# Horseshoe (Stearns County)

## OVERVIEW

Horseshoe Lake is a 550 acre lake located near Richmond, in south central Stearns County. The Sauk River drains a large portion of central Minnesota before flowing through the Sauk River Chain of Lakes (SRCL). The Sauk River watershed encompasses nearly 600,000 acres. The resulting nutrient load continues to be a concern within the watershed. Most of the lakes within the SRCL are still classified as hyper eutrophic and experience low water clarity and nuisance algal blooms. In 2018, all of the lakes within the SRCL were surveyed with netting on Horseshoe Lake occurring in early August. In addition to the standard survey, a targeted Bluegill assessment was conducted in Late May and an Index of Biotic Integrity (IBI) survey was conducted in early July. Emergent and floating leaf vegetation was mapped and covered 2.5% of the lake and 14% of the shoreline. The primary species found were cattail and white waterlily.

**ID:** 73015700

**County:** Stearns

**Near:** Richmond

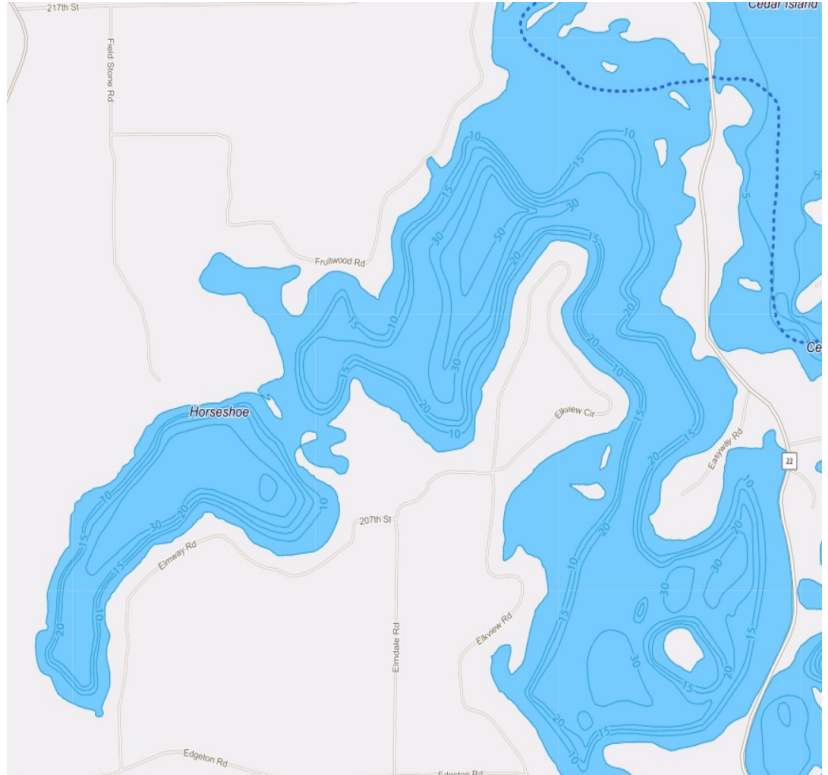
**Area:** 628.58 acres

**Littoral area:** 275 acres

**Shore length:** 13.42 miles

**Mean depth:** 14.1 feet

**Maximum depth:** 57 feet



## Water Resources Helpful Links

Click on each of the below links to go to relevant and specific information

[Fisheries Survey](#)

[Water Clarity](#)

[Water Quality](#)

[Lake Depth](#)

[Area Recreational Compass](#)

[Aquatic Invasive Species Map](#)

