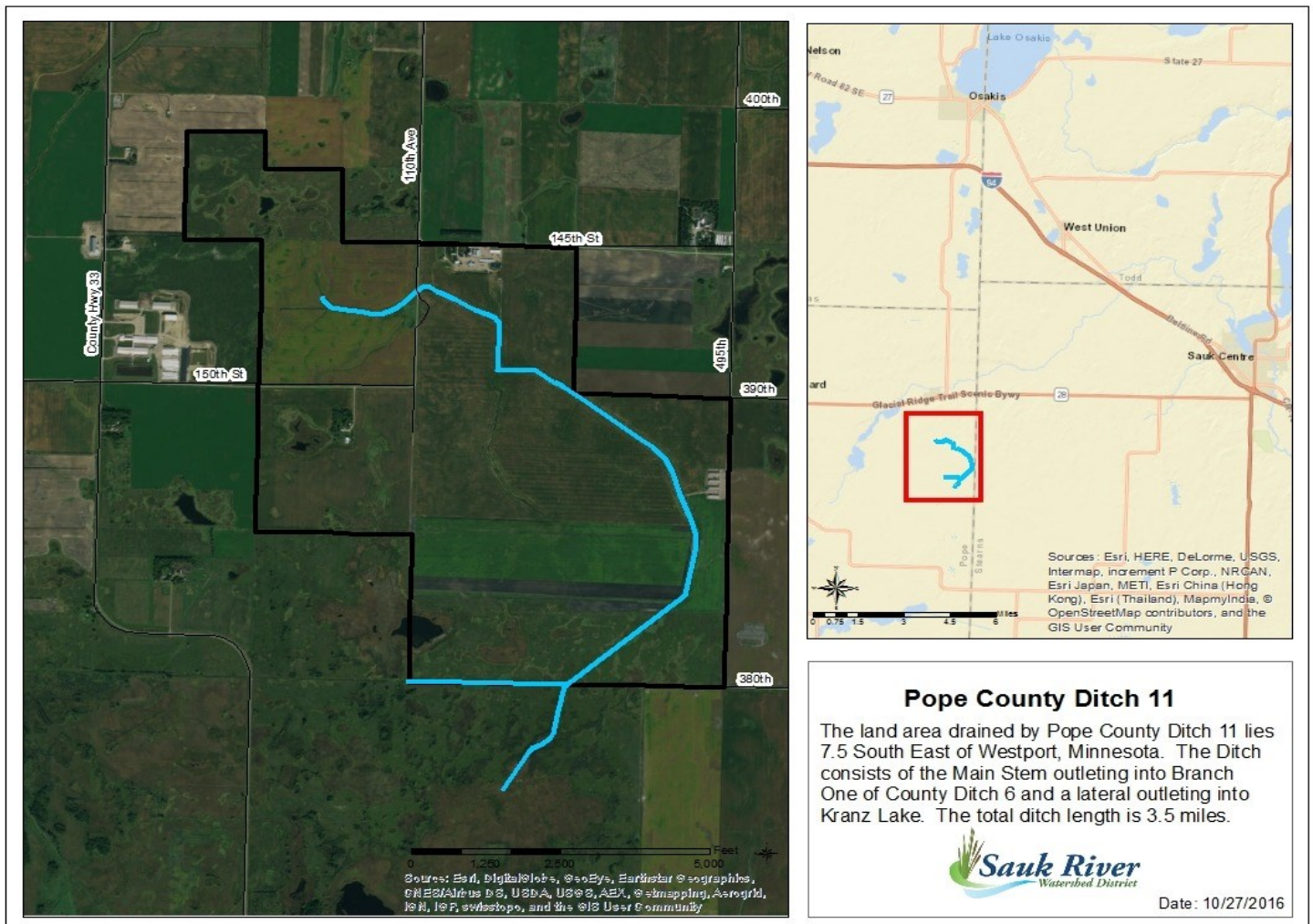


Pope County Ditch #11



OVERVIEW

Description: The land drained by Pope County Ditch #11 lies in Pope County about 1.5 miles south of Westport, Minnesota. The Ditch consists of a main stem, flowing southeast, south and west into Branch One of County Ditch #6. The total ditch length is approximately 3.0 miles.

Establishment Date: 1907

Estimated Total Benefits: \$354,091.50

Total Benefitted Acres: 1,053.69

For a full description and more information [CLICK HERE](#)