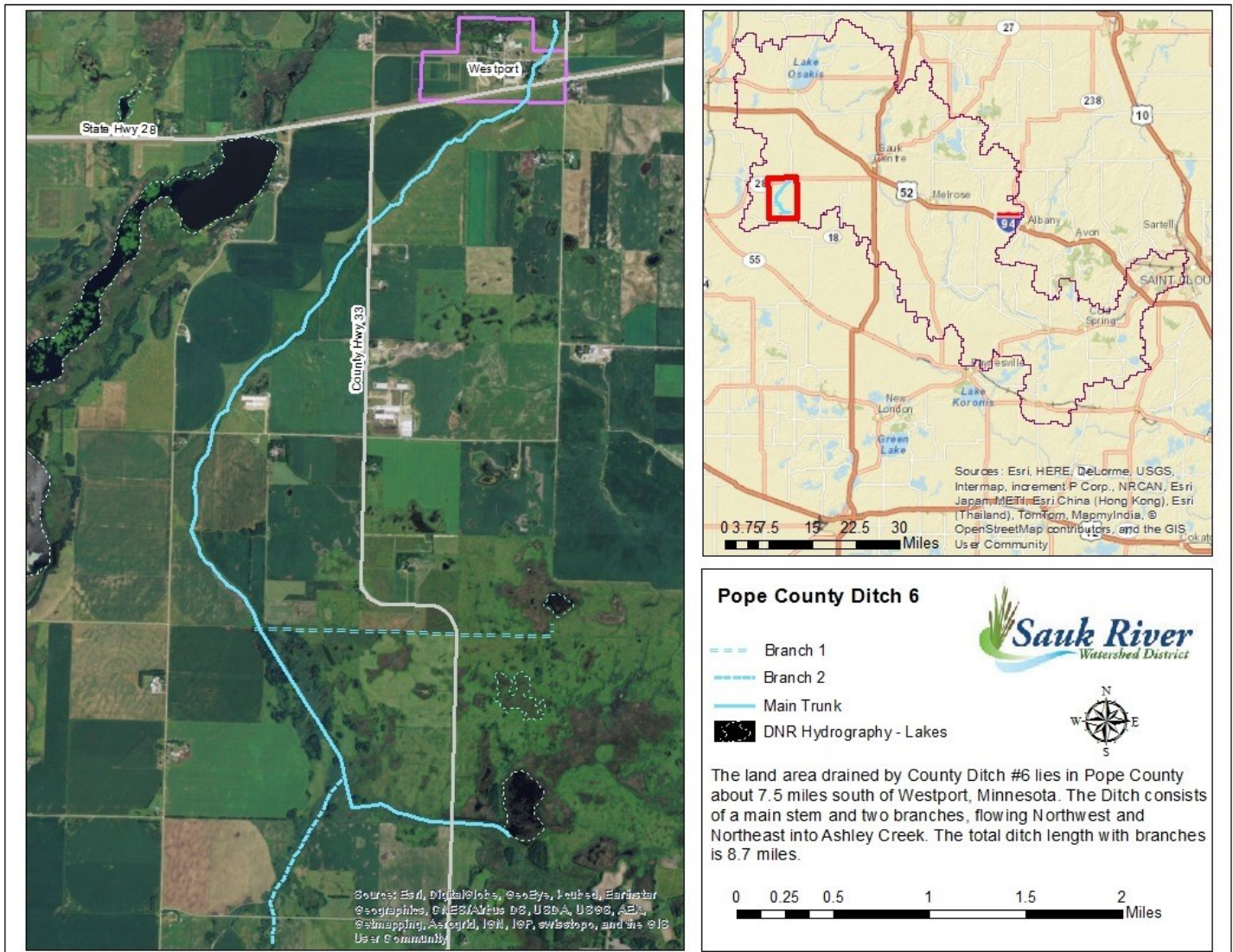


Pope County Ditch #6



OVERVIEW

Description: 8 miles of main channel and two branches. It serves as an outlet for Stearns / Pope Ditch #1 and Pope Ditch #11. System outlets into Ashley Creek near Westport.

Establishment Date: 1906

Estimated Total Benefits: \$1,039,088.57

Total Benefitted Acres: 4,203.03

For a full description and more information [CLICK HERE](#)