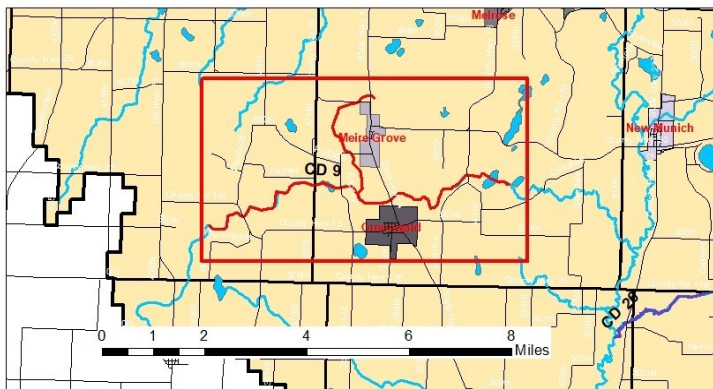
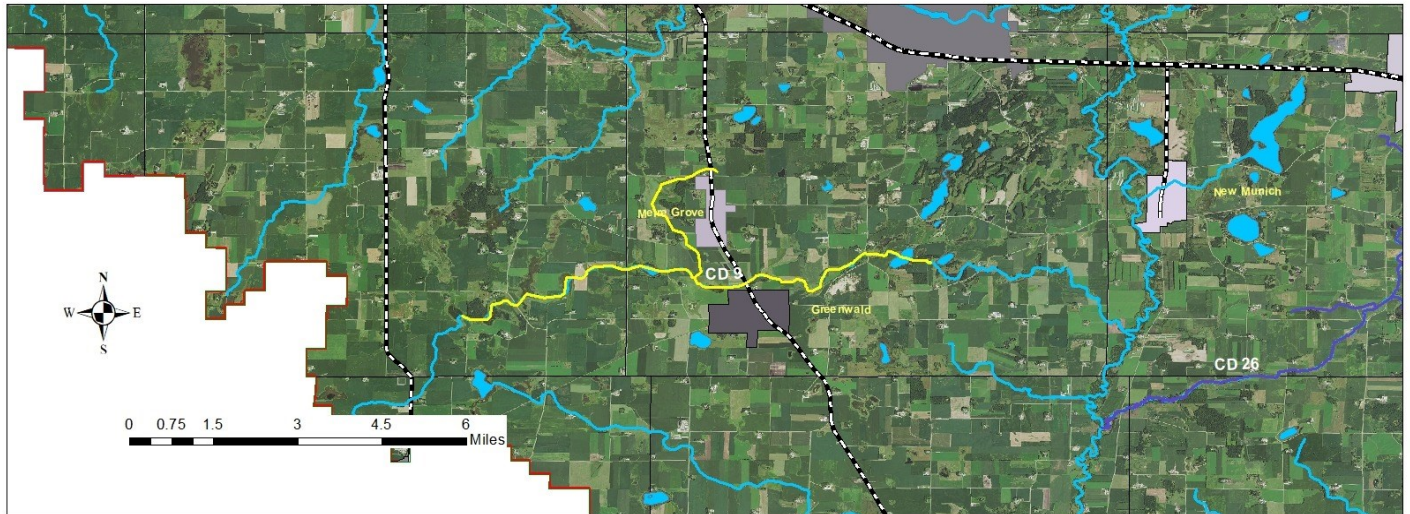


Stearns County Ditch #9



Stearns County Ditch #9

The Drainage area of this system is approximately 20.5 square miles with the headwaters located 3.5 miles West of Greenwald.

Branch 1 begins just north of Meier Grove and aligns to the west of Meier Grove and South to the junction with the main channel. It is approximately 2.5 miles in length and is a combination of open ditch and tile.

Main Channel = 7 miles
Branch 1 = 2.5 miles



OVERVIEW

Description: County Ditch #9 is 10.8 miles long with 8.8 miles of open ditch and 2.0 miles of tile. The main ditch starting in section 30 in Grove Township flowing eastward until it turns back into a private ditch west of Lake Marie. The ditch has one branch located West of Meire Grove, containing both open ditch and tile flowing south outleting into the main branch.

Establishment Date: 1903

Estimated Total Benefits: \$8,113,480.43

Total Benefitted Acres: 9,822.93

For a full description and more information [CLICK HERE](#)