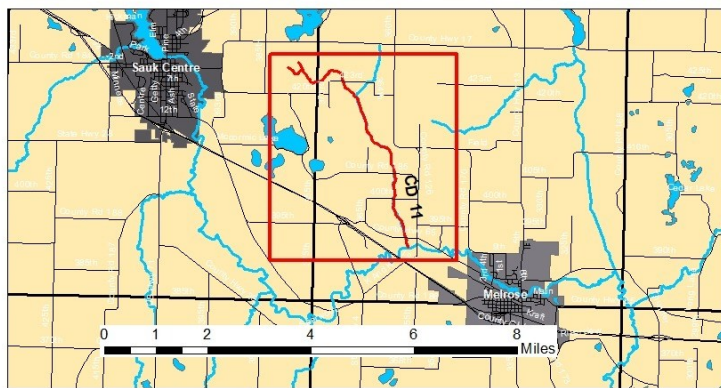
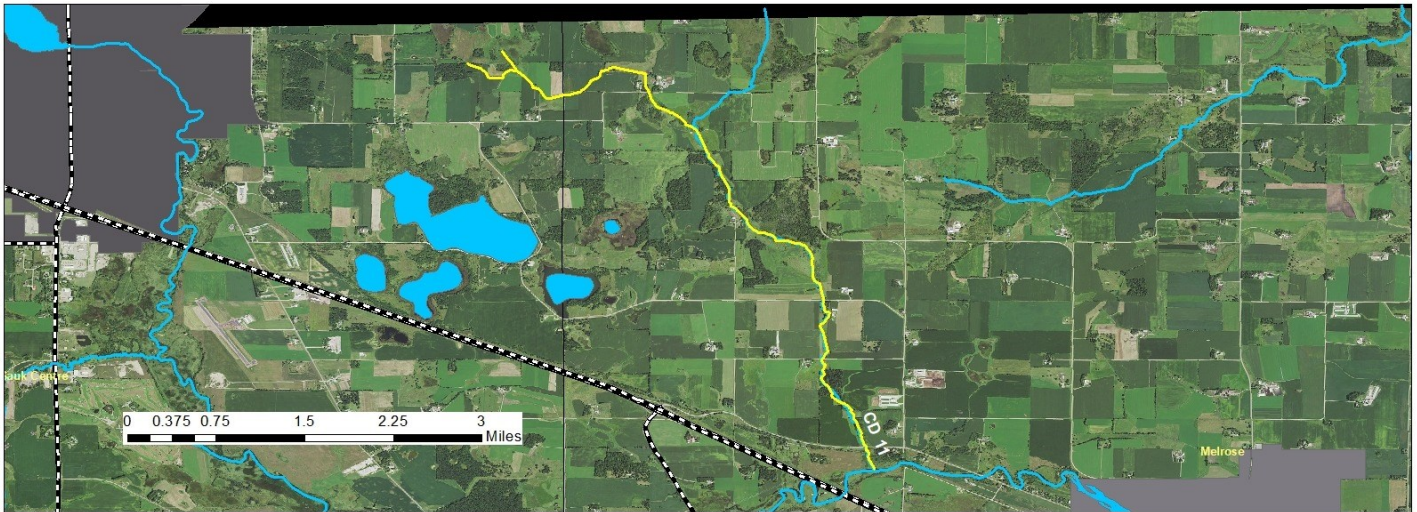


# Stearns County Ditch #11



## Stearns County Ditch #11

The Drainage area of this system is approximately 10 square miles with the headwaters located 2 miles east of Sauk Centre, the outlet into the Sauk River 2 miles west of Melrose, all North of I-94 in Stearns County.

Main Channel = 9 miles  
Branch A = .5 miles



## OVERVIEW

**Description:** CD 11 is approximately 9 miles long with a drainage area just under 10 square miles. The headwaters of CD 11 is a wetland located approximately 2 miles east of the City of Sauk Centre. The ditch generally flows south and southwest before it outlets to the Sauk River. The ditch enters the Sauk River approximately 2 miles northwest of the City of Melrose.

**Establishment Date:** 1905

**Estimated Total Benefits:** \$1,336,295.21

**Total Benefitted Acres:** 4084.94

For a full description and more information [CLICK HERE](#)