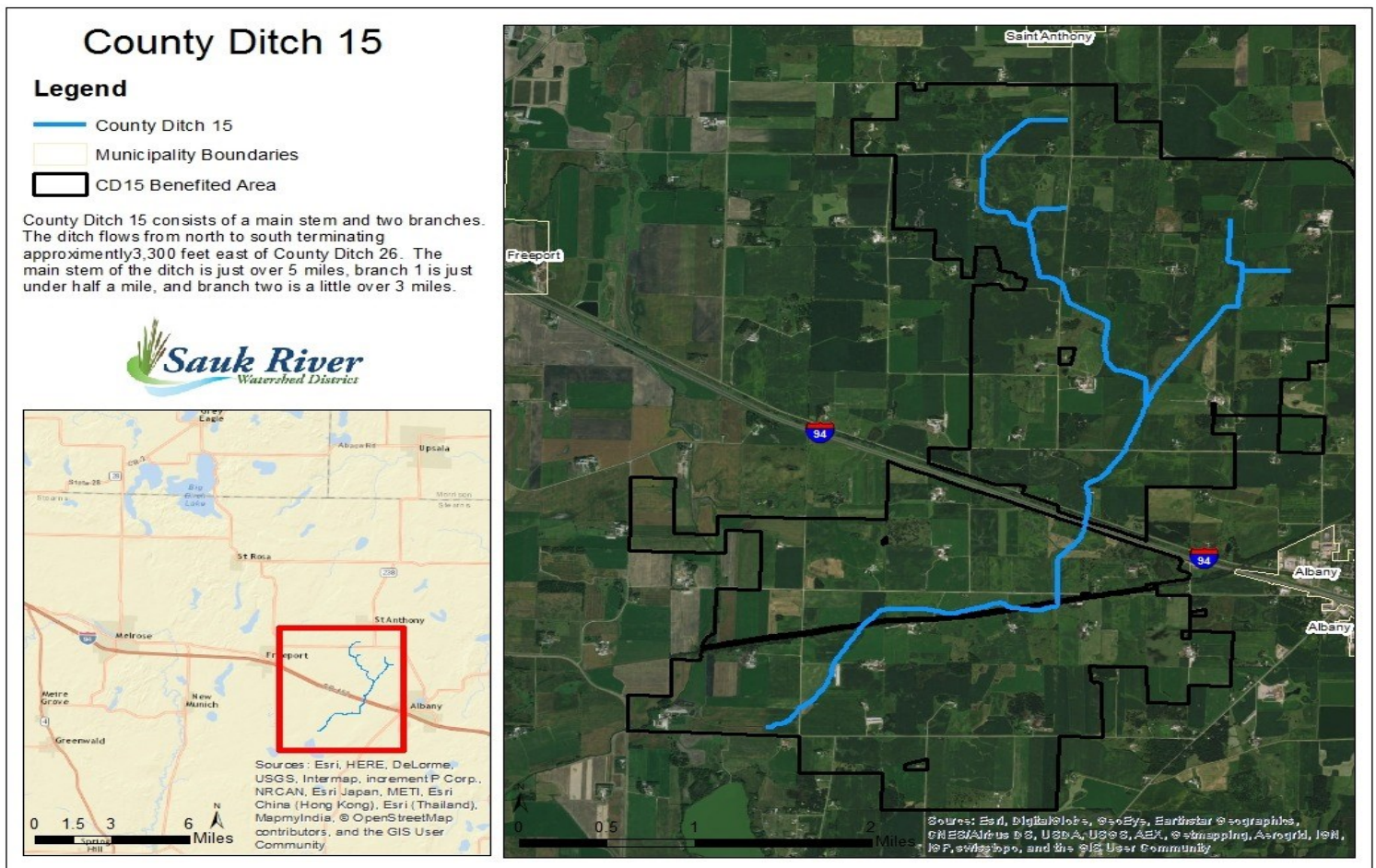


Stearns County Ditch #15



OVERVIEW

Description: Stearns County Ditch #15 consists of a main channel with two branches, located approximately 3.5 miles SE of Freeport, MN. The main channel flows NE to SW and is approximately 5 miles in length, outletting in a private ditch about 0.25 miles from SCD #26 in Section 24 of Oak Township. Branch #1 is approximately 2,200 feet in length and lies solely in Section 5 of Albany Township. Branch #2 is approximately 3 miles in length beginning in Section 31 of Krain Township, flowing South and East to its confluence with the main channel in Section 8 of Albany Township.

Establishment Date: 1907

Estimated Total Benefits: \$658,377.00

For a full description and more information [CLICK HERE](#)