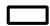

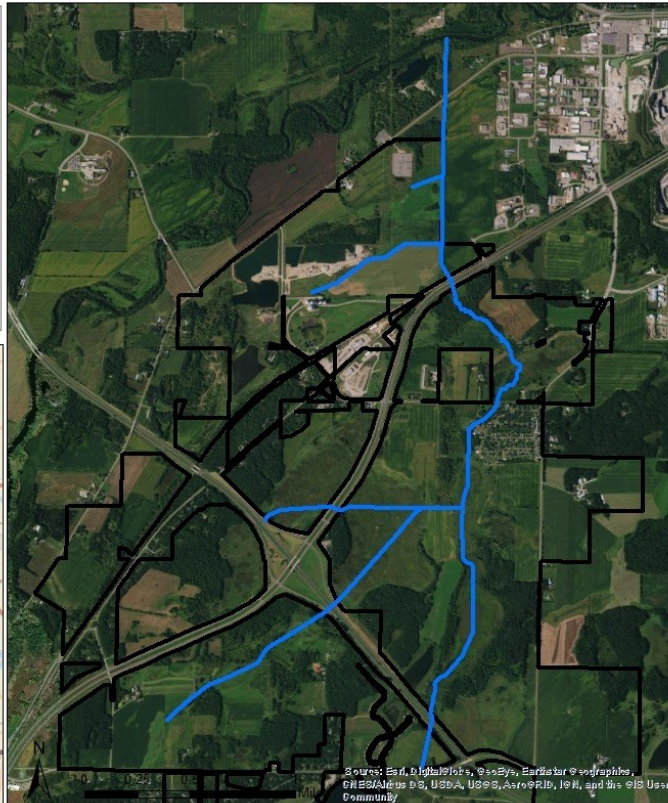


Stearns County Ditch #17

Stearns County Ditch 17

The headwaters of CD17 begin approximately 1.5 mi West of the City of Waite Park. The ditch flows South to North for approximately 3.5 miles. CD 17 consists of the main, two branches, and a fork on Branch 1.

-  SCD #17 Benefitted Area
-  SCD #17 Open Ditch



OVERVIEW:

The land drained by SCD # 17 lies SW of Waite Park and includes 3,848 acres in St. Joseph, Waite Park, and Rockville Townships.

Description:

Main Channel

- **Length - 3.5 miles**
- **Start - Section 36, T-124-N, R-29-W, St. Joseph Township**
- **End - Section 13, T-124-N, R-29-W, St. Joseph Township**

Branch 1

- **Length - ~ 2 miles**
- **Start - Section 35, T-124-N, R-29-W, St. Joseph Township**
- **End - Section 25, T-124-N, R-29-W, St. Joseph Township**

Fork on Branch 1

- **Length - ~ 0.75 miles**
- **Start - Section 26, T-124-N, R-29-W, St. Joseph Township**
- **End - Section 25, T-124-N, R-29-W, St. Joseph Township**

Establishment Date: 1905

Estimated Total Benefits: \$187,330.00

For a full description and more information [CLICK HERE](#)