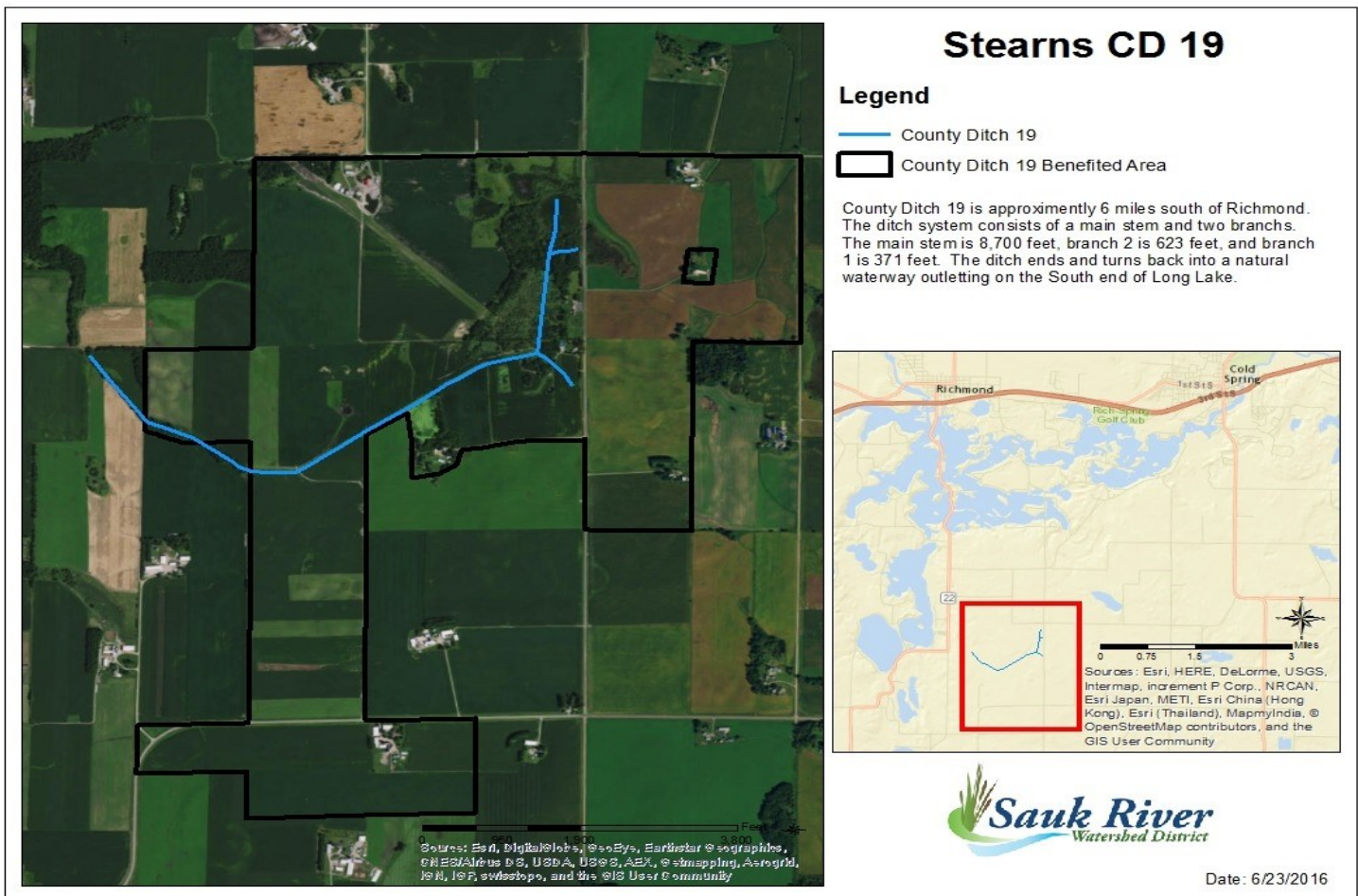


# Stearns County Ditch #19



## Location:

**Start** - Section 7, T-122-N, R-30-W, Luxemburg Township

**End** - Section 1, T-122-N, R-31-W, Eden Lake Township

## Description:

County Ditch # 19 is approximately 1.83 miles long and lies about four miles northwest of Eden Valley, MN. The ditch consists of two branches off the main stem flowing south then westerly eventually becoming a private ditch, that outlets into Long Lake. The branches are ~370 feet and ~625 feet in length, respectively. Both branches flow from east to west.

**Establishment Date:** 1905

**Estimated Total Benefits:** \$335,403

For a full description and more information [CLICK HERE](#)