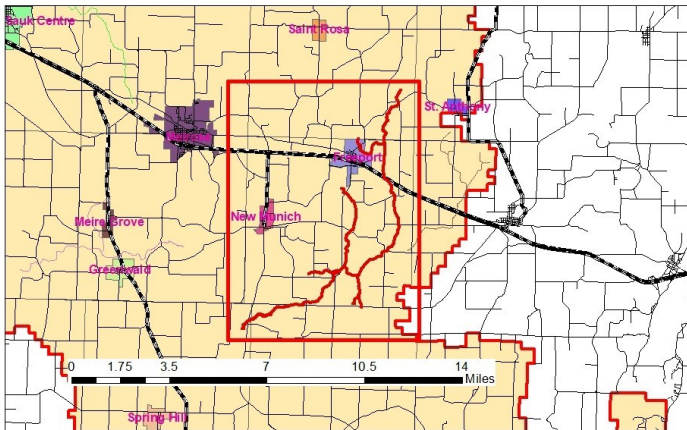


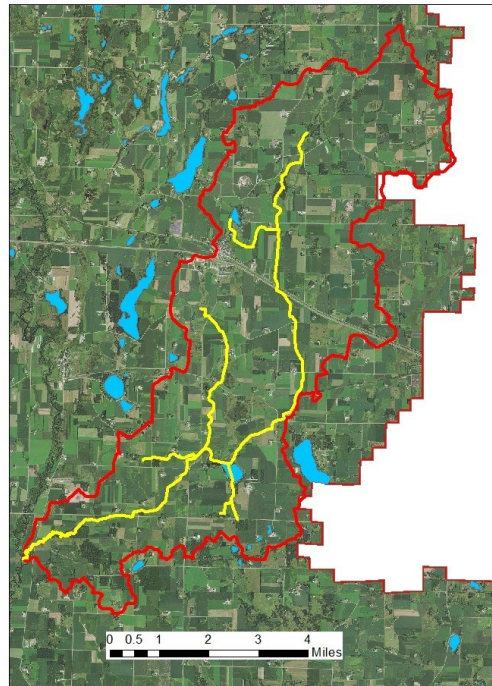
Stearns County Ditch #26



Stearns County Ditch #26

Stearns County Ditch #26 is approximately 20 miles in length, comprised of the main and 4 laterals. The drainage area is outlined in Red and is approximately 32 square miles.

The main channel shares the alignment of Getchell Creek. The ditch begins approximately 3 Miles NNE of Freeport and outlets in the Sauk River approximately 4 miles SSW of New Munich.



Location: Near Freeport and New Munich

Main

Start - Section 25, T-126-N, R-32-W, Millwood Township

End - Section 1, T-124-N, R-33-W, Spring Hill Township

Branch #1

Start - Section 34, T-126-N, R-32-W, Millwood Township

End - Section 2, T-125-N, R-32-W, Oak Township

Branch #2

Start - NW Section 2, T-124-N, R-32-W, St. Martin Township

End - Section 35, T-125-N, R-32-W, Oak Township (Getchell Lake)

Branch #3

Start - Section 10, T-125-N, R-32-W, Oak Township

End - Section 27, T-125-N, R-32-W, Oak Township

Branch #4

Start - SW Section 28, T-125-N, R-32-W, Oak Township

End - Section 27, T-125-N, R-32-W, Oak Township

Description:

This system is 21.7 miles long. Generally flowing south and west before it transitions to a natural stream. CD #26 is also known as Getchell Creek and is designated as a public water.

Establishment Date: 1905

Estimated Total Benefits: \$1,191,097