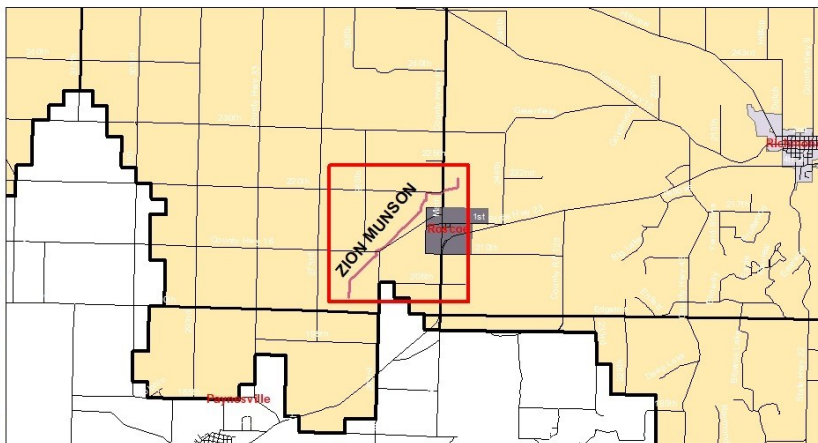
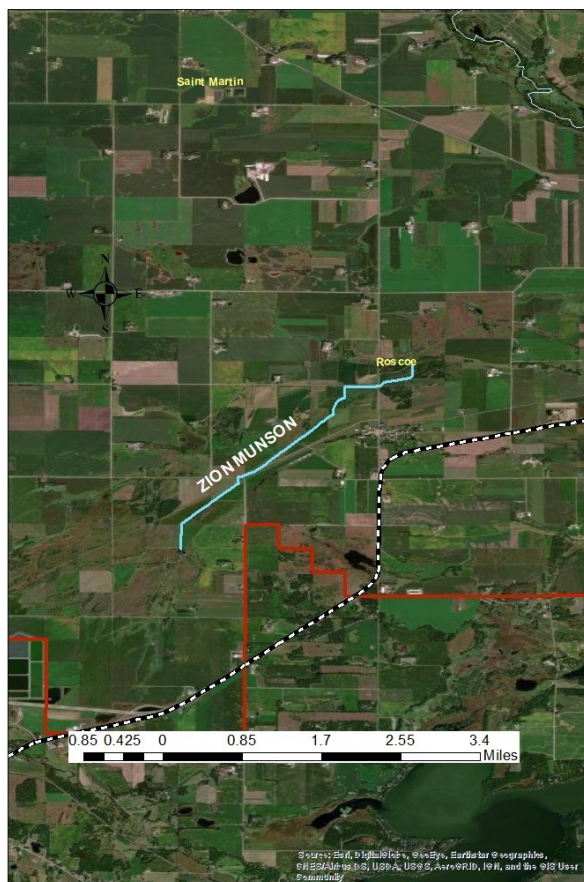


Stearns County Ditch Zion-Munson



Stearns County Ditch # Zion-Munson

Stearns County Ditch # Zion Munson lies just NW of Roscoe. It flows Southwest to Northeast and is approximately 3 miles in length. The drainage area of the system encompasses about 15 square miles.



Location: Roscoe

Start - Section 35, T-125-N, R-32-W, Zion Township

End - Section 19, T-123-N, R-31-W, Munson Township

Description: Stearns Zion-Munson Ditch flows generally from SW to NE, following the topography of the landscape, constructed in the lowest part of its sub-watershed. The ditch is approximately 3 miles in length and drains around 15 square miles.

Establishment Date: 1906

Estimated Total Benefits: \$5,553,093.57