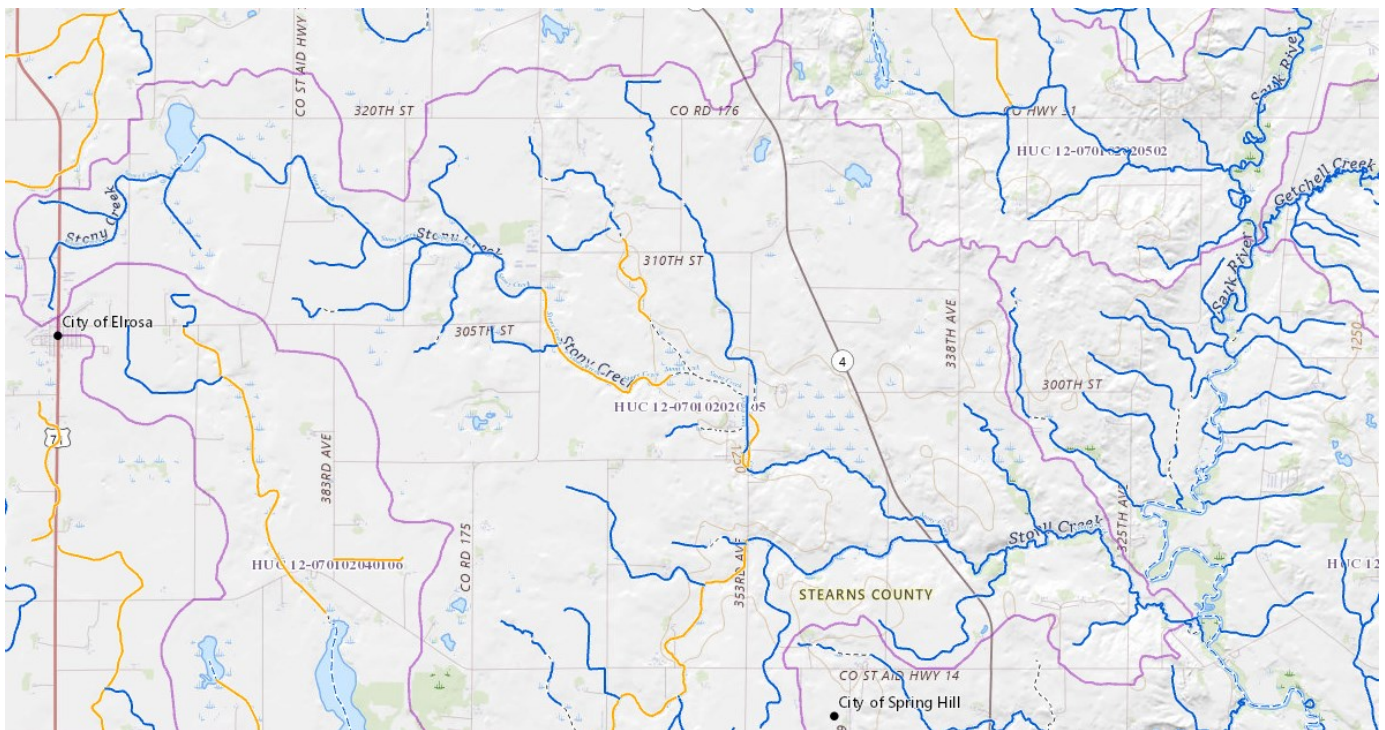


Stony Creek

OVERVIEW

Stony Creek is a general warmwater stream in western Stearns County on the very edge of the watershed. It begins north of Elrosa and flows NW until flowing through Stony Creek Waterfowl Production Area (WPA). The creek continues SW as it makes its way towards Spring Hill. Along the way, it passes by Stony Creek Dairy. Near Highway 4, County Ditch 31 outlets into Stony Creek. The last stretch of the Stony Creek meanders west for 2.34 miles until outletting into the Sauk River near the Spring Hill County Park.

According to the MPCA surface water dashboard, 68.8% of Stony Creek's watershed is agricultural. It has been assessed for both aquatic life and aquatic recreation. It was found to be impaired for fish bioassessments and *E. coli*. The most recent fish Index of Biological Integrity (IBI) was completed in 2013 and received a score of 13 (Poor). However, there is a corridor of wetlands the creek passes through before reaching the Sauk River.



Helpful Links

Click on each of the below links to go to relevant and specific information.

[MPCA Surface Water](#)

[MPCA Water Quality Dashboard](#)

ID: 07010202-724, 725, 726

County: Stearns

Near: Elrosa, Spring Hill

Drainage Area: 25.82 square miles

Length: 11.15 miles

