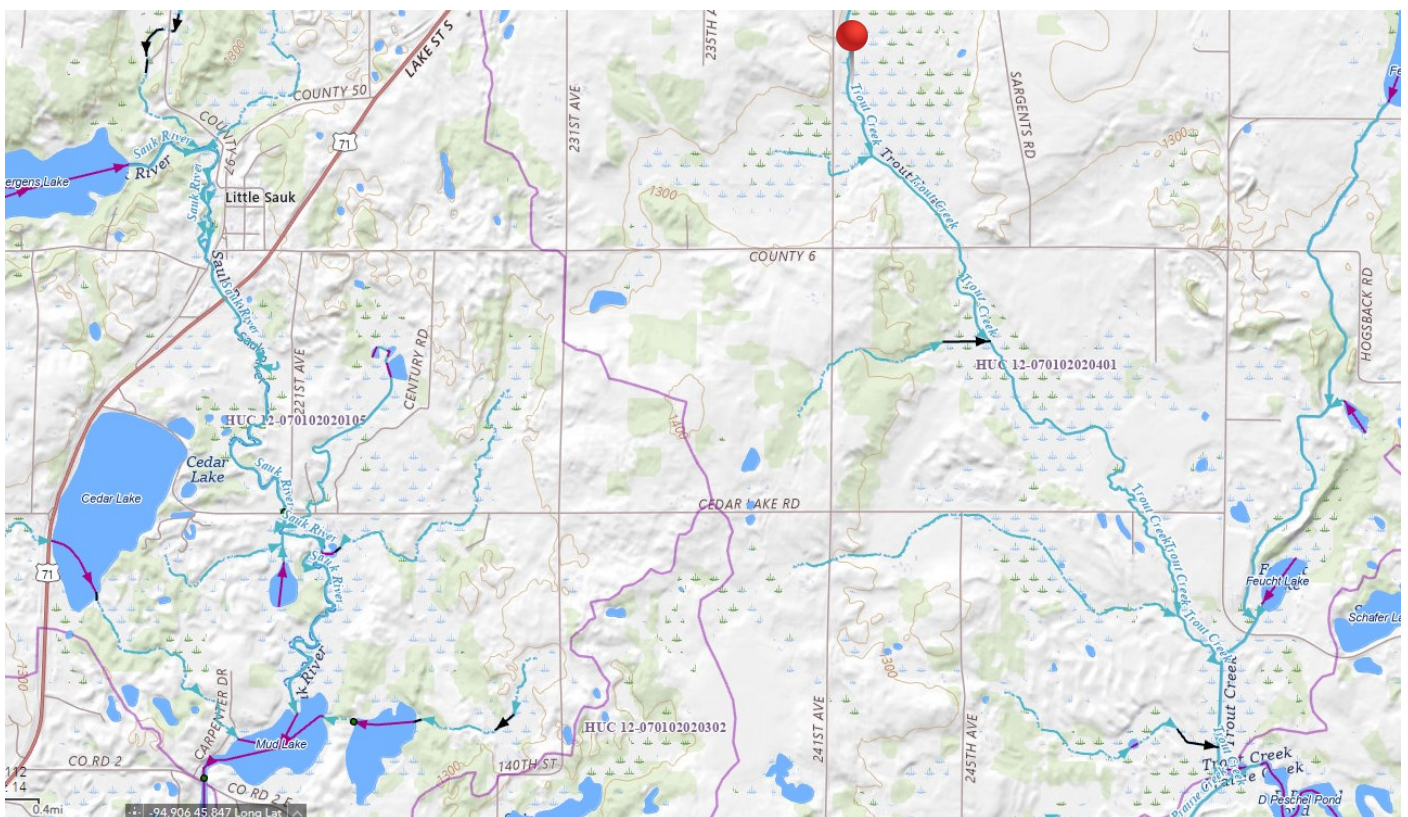


Trout Creek

OVERVIEW

Trout Creek is a general COLD-water stream in southern Todd County. Trout streams are primarily groundwater/spring-fed, keeping the temperature of the water lower. Trout prefer water temps in the mid-50s to low 60s. This creek starts east of Little Sauk and north of Little Birch Lake. It's a short creek that flows S/SE for 3.72 miles until it outlets into Prairie Creek, which eventually leads into Little Birch Lake (see our other profile on [Prairie Creek](#)). Along the way, it receives flow from 4 unnamed tributaries.

This stream is protected for drinking water and as a trout waterbody. According to the MPCA surface water dashboard, 75.6% of Trout Creek's watershed is agricultural. It was assessed for aquatic life in 2018 and met the standards for assessed parameters. The Index of Biological Integrity (IBI) for fish received a score of 37 (Fair), while the IBI for invertebrates was 71 (Good).



Helpful Links

Click on each of the below links to go to relevant and specific information.

[MPCA Surface Water](#)

[MPCA Water Quality Dashboard](#)

ID: 07010202-570

County: Todd

Near: Little Sauk, Grey Eagle

Drainage Area: 16.49 square miles

Length: 3.72 miles

