

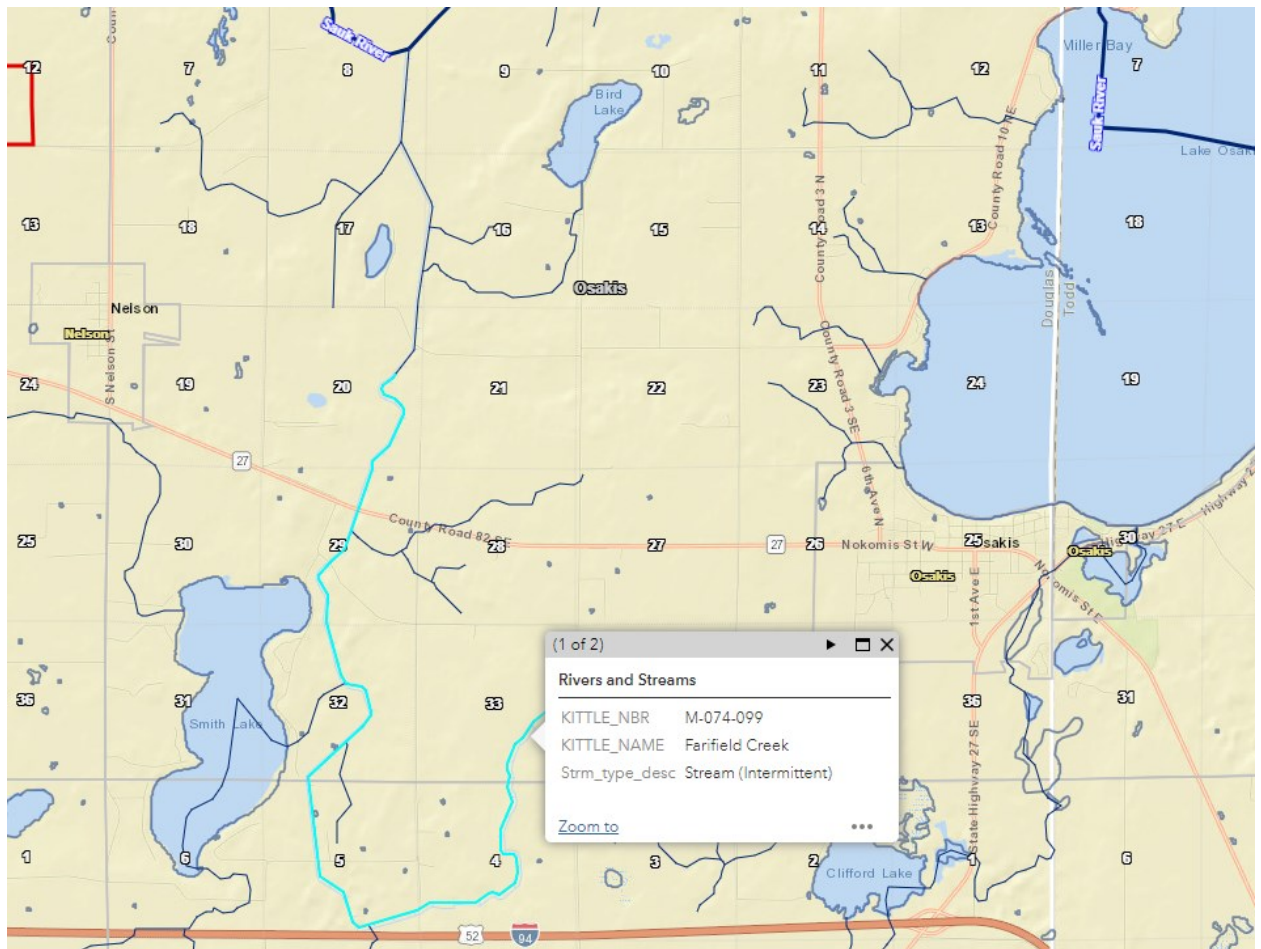
Fairfield Creek

OVERVIEW

Fairfield Creek is a warmwater stream in southeastern Douglas County, in the very northern portion of the Sauk River Watershed. It begins west of Osakis near County Road 2. It meanders S/SW for about 2 miles, then turns north for the rest of its reach. Before it outlets into Crooked Lake Ditch (Judicial Ditch #2), Fairfield Creek receives inputs from both Smith and Bird Lakes. Crooked Lake Ditch eventually outlets into Lake Osakis, which is the headwaters of the Sauk River.

According to the MN Pollution Control Agency (MPCA), 55.2% of the creek's watershed is agricultural (row crop, pasture). It has been listed as impaired for low dissolved oxygen levels. The SRWD does not actively monitor Fairfield Creek, but it does regularly monitor

Judicial Ditch #2 by collecting water samples and taking flow measurements. More details about this waterbody can be found on the MPCA Surface Water site, linked below.



Helpful Links

Click on each of the below links to go to relevant and specific information.

[MPCA Surface Water](#)

[MPCA Water Quality Dashboard](#)

ID: 07010202-584, 586, 587

County: Douglas

Near: Osakis, Nelson

Length: 6.39 miles

