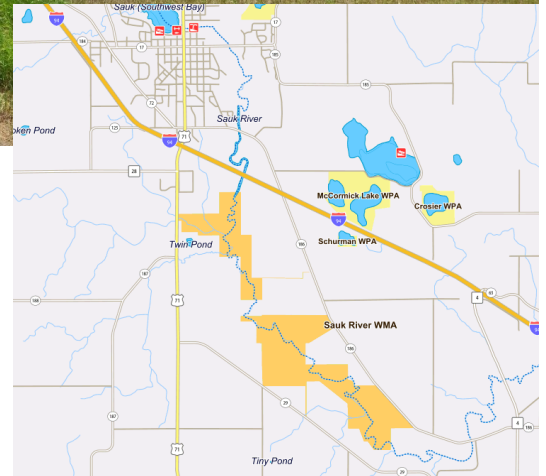
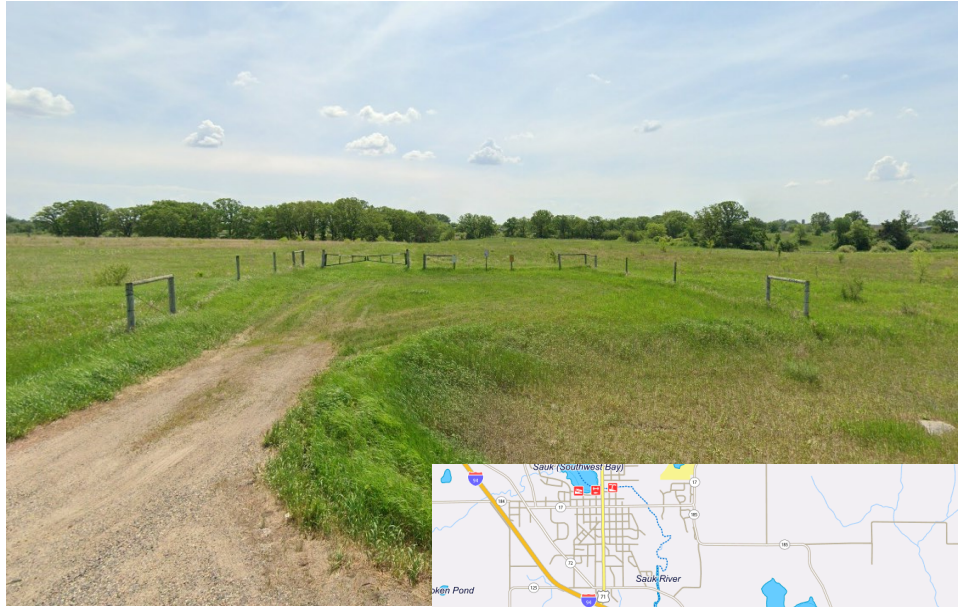


Sauk River WMA

OVERVIEW

The Sauk River Wildlife Management Area (WMA) sits along 5.5 miles of the Sauk River just south of Sauk Centre. Over 3 miles of the river is in permanent cover and promotes wildlife and water quality improvement. Along the river's edge, you can find willow, alder and cattail. Restored prairies compose the upland areas.



The environment along the river makes an ideal pheasant and deer wintering area. Within the Sauk River WMA, there are good opportunities for hunting, trapping, hiking and wildlife viewing! While visiting WMAs, respect private property boundaries and ask for permission before going onto private lands.

Game Species: Deer, Small Game, Pheasants, Waterfowl

Area: 939.11 acres

Perimeter: 13.88 miles

County: Stearns

Near: Sauk Centre

Location: 45°40'31.9"N
94°53'59.4"W



Helpful Links

Click on each of the below links to go to relevant and specific information.

[DNR: Discover WMAs](#)

[DNR: Adopt a WMA](#)

[MPCA Surface Water](#)

[MPCA Water Quality Dashboard](#)

