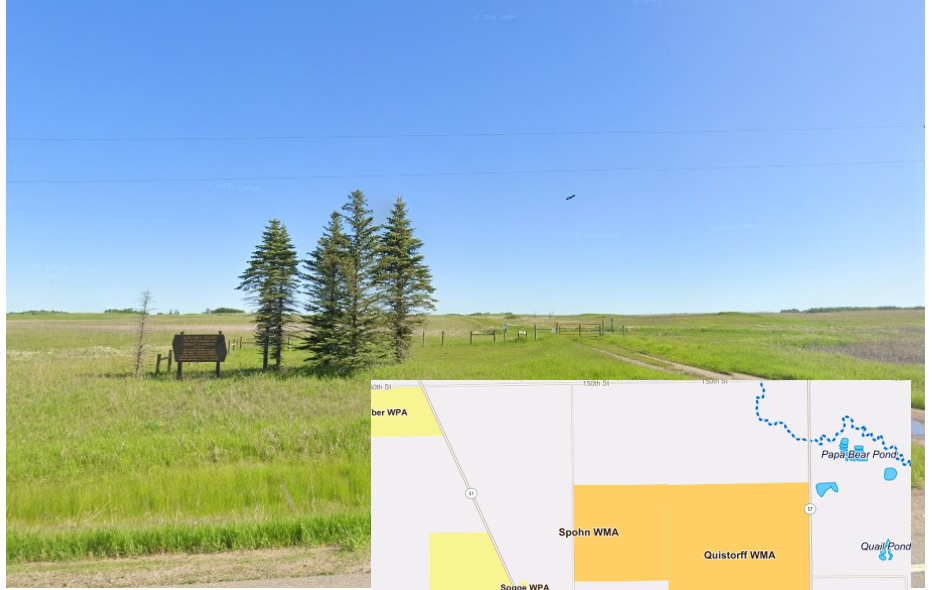


# Quistorff WMA

## OVERVIEW

The Quistorff Wildlife Management Area (WMA) sits 2 miles north of West Union off of CR 2. This area is composed of rolling hills featuring grass fields, native grasses, and low land grass. Quistorff features restored native grasses and wetlands, and contains some native virgin prairie. The management style of this WMA is focused on improving and maintaining habitat for the diversity of both native plants and wildlife.



Quistorff WMA offers recreational opportunities year round, including hunting, trapping, hiking, wildlife viewing, cross-country skiing and snow shoeing. While visiting WMAs, respect private property boundaries and ask for permission before going onto private lands. No motorized vehicles are allowed on the WMA, except designated roads and parking lots. ATVs, OHVs, motorized watercraft, and snowmobiles are not allowed anywhere on the WMA.

**NOTICE:** Most years visitors may recognize large areas within the WMA that have been mowed or sprayed. These efforts are done to control thistle, wild parsnip and shrub/tree infestations. Additionally, significant wetland work will be occurring on the unit from 2024-2027.

**Game Species:** Deer, Small Game, Pheasants, Waterfowl

**Area:** 359.09 acres

**Perimeter:** 2.98 miles

**County:** Stearns

**Near:** West Union/ Osakis

**Location:** 45°49'41.4"N 95°05'25.6"W



## Helpful Links

Click on each of the below links to go to relevant and specific information.

[DNR: Discover WMAs](#)

[DNR: Adopt a WMA](#)

[MPCA Surface Water](#)

&

[MPCA Water Quality Dashboard](#)  
for the Sauk River (to NE in WMA)

