

# Kirschner WMA

## OVERVIEW

The **Kirschner Wildlife Management Area (WMA)** sits 5 miles south of Richmond, west of CSAH 163. The WMA features a diverse landscape! Kirschner WMA includes several small, shallow **wetlands, restored prairie, and a wooded shelterbelt of coniferous and hardwood trees.** The management focus of this WMA is to maintain the wooded grove, wetlands and prairie **utilizing fire as a tool.**

The landscape of Kirschner WMA offers a variety of **recreational opportunities.** Activities include hunting, trapping, hiking, and wildlife viewing. The **southern wooded grove** offers a home and winter **shelter to numerous prairie and woodland species.** While visiting WMAs, respect private property boundaries and ask for permission before going onto private lands.

**Game Species:** Deer, Small Game, Forest Upland Birds, Pheasants, and Waterfowl

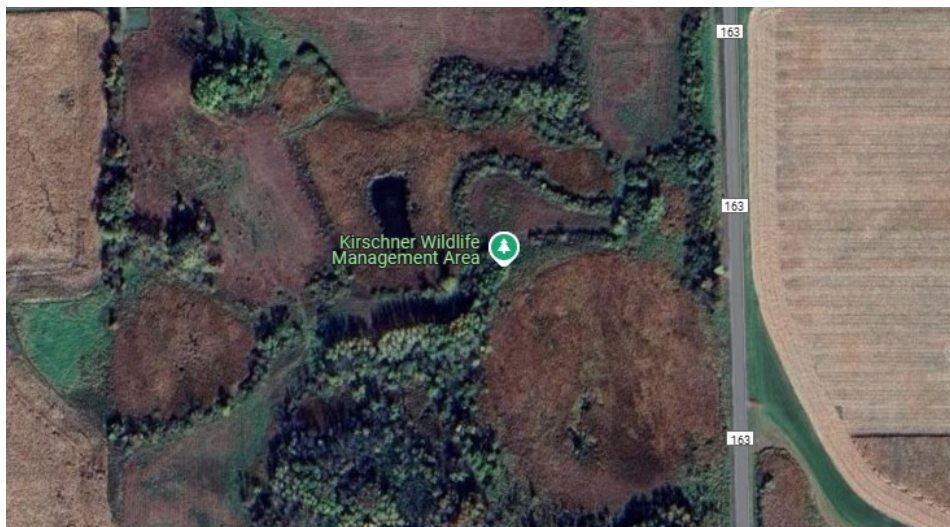
**Area:** 38.95 acres

**Perimeter:** 0.99 miles

**County:** Stearns

**Near:** Richmond

**Location:** 45°23'29.1"N 94°29'25.2"W



## Helpful Links

Click on each of the below links to go to relevant and specific information.

[DNR: Discover WMAs](#)

[DNR: Adopt a WMA](#)

