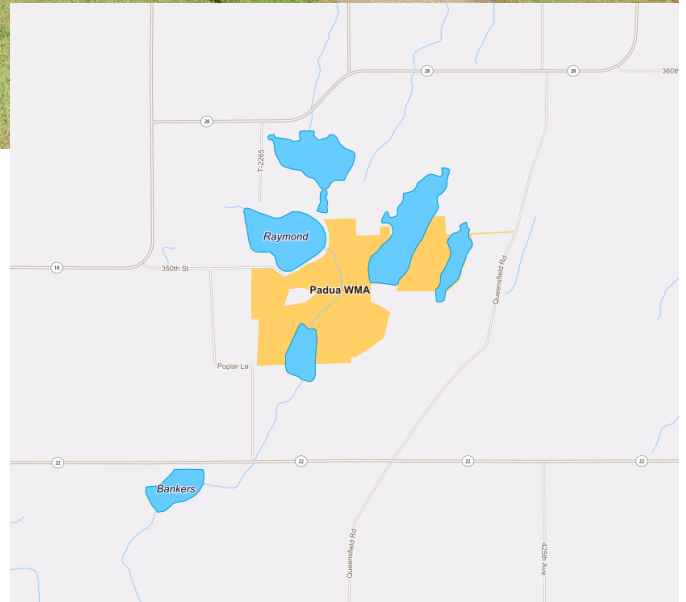


# Padua WMA

## OVERVIEW

The Padua Wildlife Management Area (WMA) sits 2 miles northeast of Padua. The WMA is composed of restored prairie, old growth hardwood forest and larger, shallow open-water wetlands. The management goals of the WMA include restoration of exotic grasslands to native prairie and the acquisition of important adjacent tracts. This area is quite unique as it is part of a prairie hardwood grove. In this unique area, islands of bur oak, basswood, sugar maple, and ash are commonly found around large or prairie lakes/marsh complexes (and were mostly protected from intense prairie fires).



Padua WMA provides the opportunity for a variety of outdoor activities. Some of the most common uses are hunting, trapping, hiking and wildlife viewing/photography! While visiting WMAs, respect private property boundaries and ask for permission before going onto private lands.

**Game Species:** Deer, Small Game, Forest Upland Birds, Pheasants, Waterfowl, Turkey



**Area:** 323.82 acres

**Perimeter:** 4.97 miles

**County:** Stearns

**Near:** Padua

**Location:** 45°37'40.5"N 95°01'20.6"W

## Helpful Links

Click on each of the below links to go to relevant and specific information.

[DNR: Discover WMAs](#)

[DNR: Adopt a WMA](#)

[MPCA Surface Water: Raymond Lk](#)

[MPCA Water Quality Dashboard:](#)

[Raymond, 73-0277-00, 73-02368-00,](#)

[73-0578-00](#)

