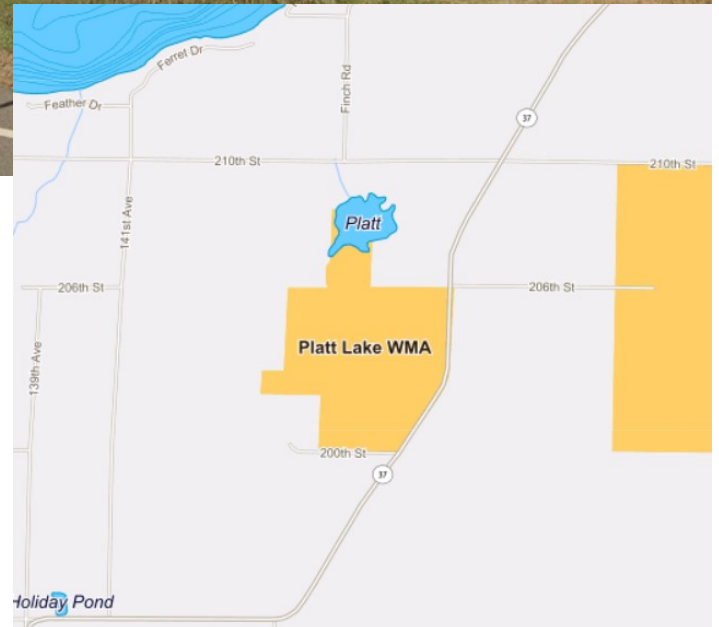
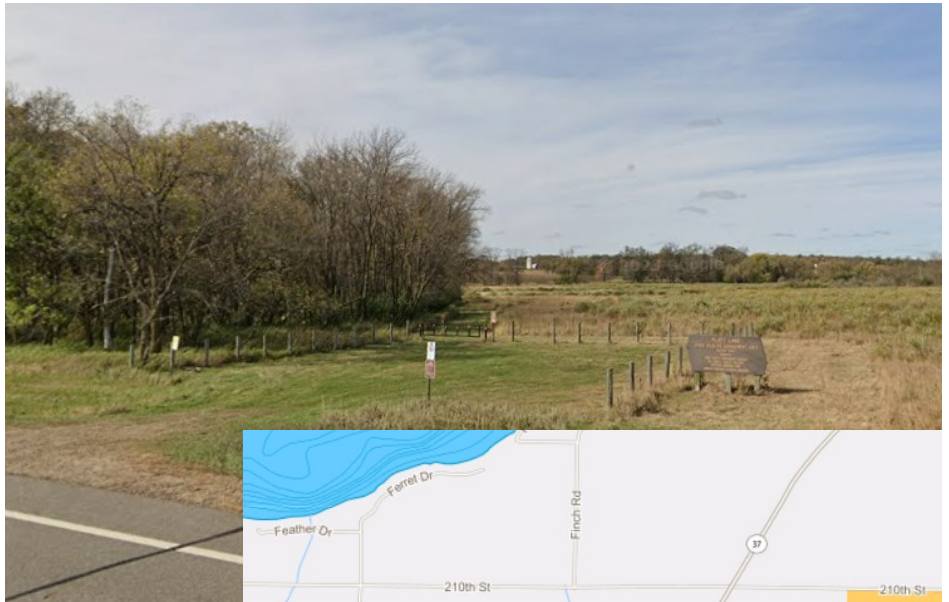


Platt Lake WMA

OVERVIEW

The Platt Lake Wildlife Management Area (WMA) sits 6 miles northeast of Osakis along CSAH 37. The WMA features **Platt Lake to the north, and Boss Creek runs through the property.** The landscape of the area is mainly open landscape with tame grassland, small wooded lots and wooded edges. **Restored prairie and restored/partially drained small wetlands make up the remaining area of the WMA.**



Platt Lake WMA provides the opportunity for a variety of outdoor activities year-round. Some of the highlighted activities are a **hunting/hiking trail and an ungroomed cross country skiing trail.** Additional activity options include **trapping, snow shoeing and wildlife viewing/photography!** While visiting WMAs, respect private property boundaries and ask for permission before going onto private lands.

Game Species: Deer, Small Game, Pheasants, Waterfowl, Turkey, Doves

Area: 158.79 acres

Perimeter: 2.51 miles

County: Todd

Near: Osakis

Location: 45°55'18.4"N 95°03'29.4"W



Helpful Links

Click on each of the below links to go to relevant and specific information.

[DNR: Discover WMAs](#)

[DNR: Adopt a WMA](#)

MPCA Surface Water:

[Platt Lake and Boss Creek](#)

MPCA Water Quality Dashboard:

[Platt Lake and Boss Creek](#)

