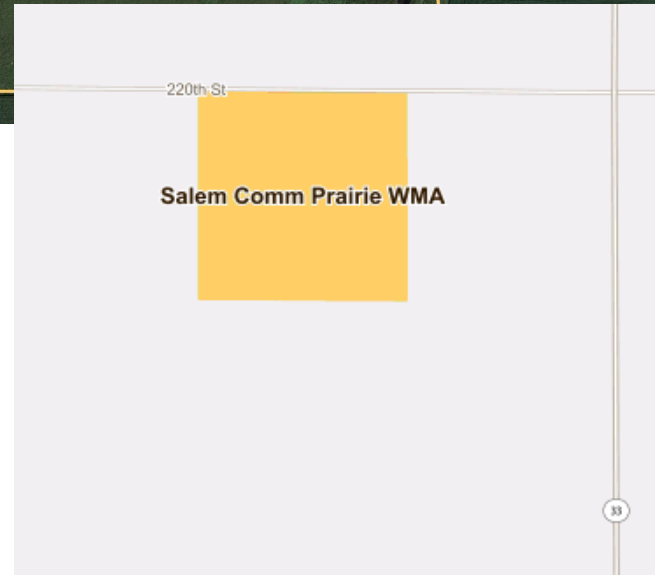
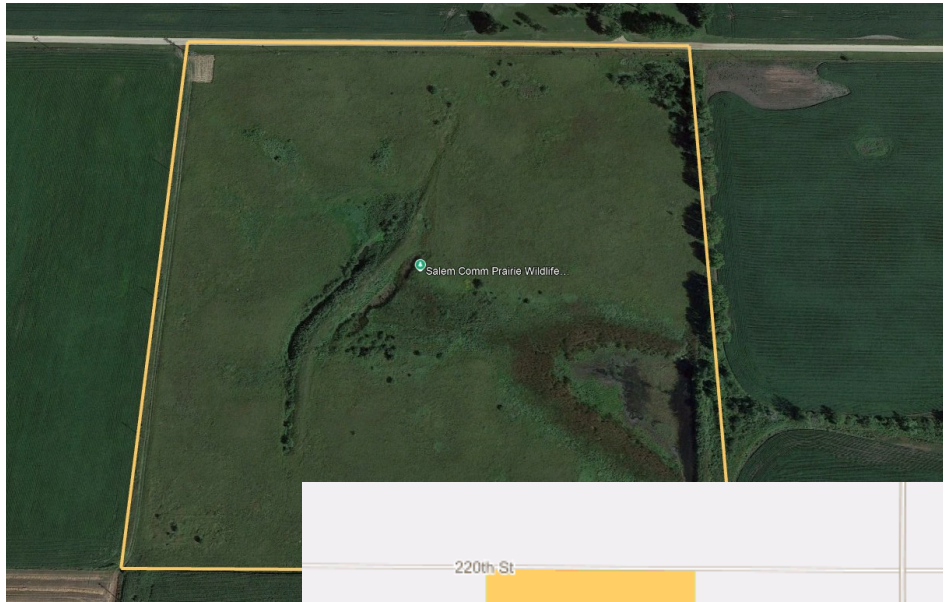


Salem Comm Prairie WMA

OVERVIEW

The Salem Comm Prairie Wildlife Management Area (WMA) sits 4 miles west of Roscoe or 6.5 miles North of Paynesville. The narrow WMA is composed of **mostly cool season grasslands with 2 created wetlands.**



For its relatively small size this WMA **often experiences exceptional spring migration concentrations of waterfowl.** The open vistas and nearby country church provide a nice backdrop.

While visiting WMAs, respect private property boundaries and ask for permission before going onto private

Game Species: Pheasants, Waterfowl

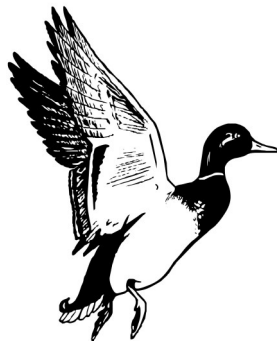
Area: 39.63 acres

Perimeter: 1 mile

County: Stearns

Near: Roscoe

Location: 45.441149, -94.711998



Helpful Links

Click on each of the below links to go to relevant and specific information.

[DNR: Discover WMAs](#)

[DNR: Adopt a WMA](#)

