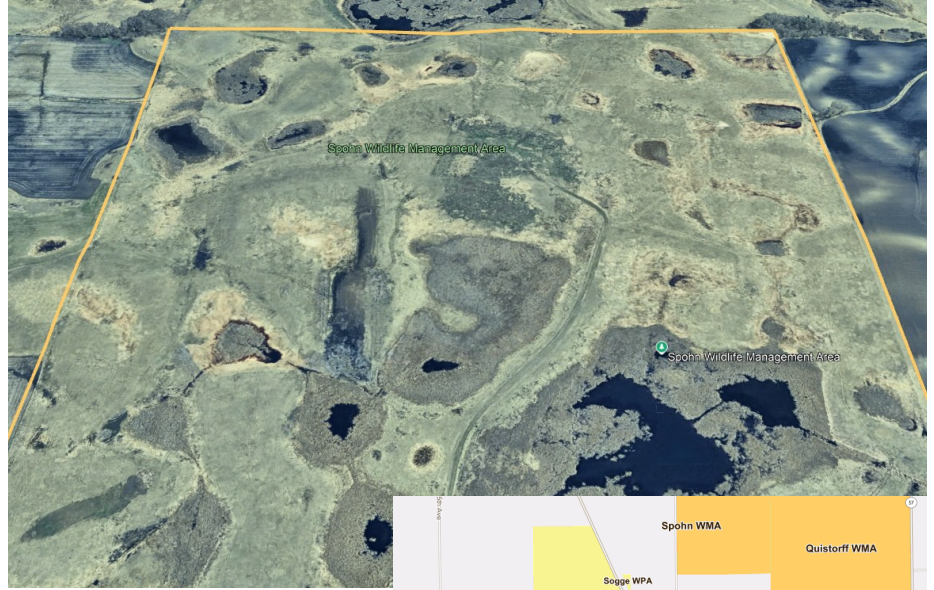


# Spohn WMA

## OVERVIEW

**The Spohn Wildlife Management Area (WMA)** sits 2 miles north of West Union. To access this WMA from Osakis by going 2 miles south on county road 51, then 1/4 mile east on county road 2, then 1/2 mile north on township road.



This area is composed of rolling hills featuring grass fields, native grasses, and low land grass. **Spohn features restored native grasses and wetlands, and contains some native virgin prairie.** This unit is part of a larger complex of 4 WMAs and 2 Federal WPAs.

While visiting WMAs, respect private property boundaries and ask for permission before going onto private lands.

**Game Species:** Deer, Small Game, Pheasants, Waterfowl



**Area:** 161.78 acres

**Perimeter:** 2.01 miles

**County:** Todd

**Near:** West Union/ Osakis

**Location:** 45.83'5303"N, -95.10463"W

## Helpful Links

Click on each of the below links to go to relevant and specific information.

[DNR: Discover WMAs](#)

[DNR: Adopt a WMA](#)

[MPCA Surface Water](#)

&

[MPCA Water Quality Dashboard](#)  
for the Sauk River (to NE in WMA)

